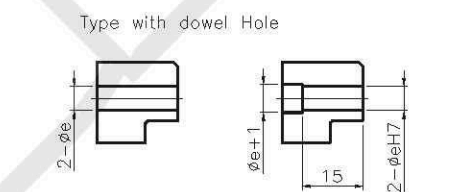
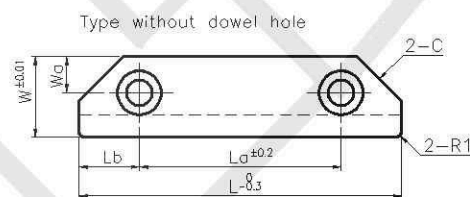
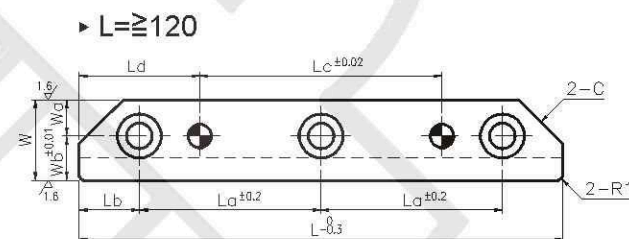
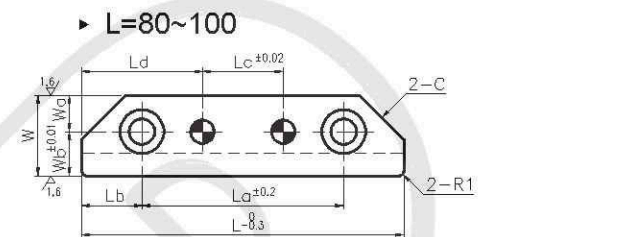
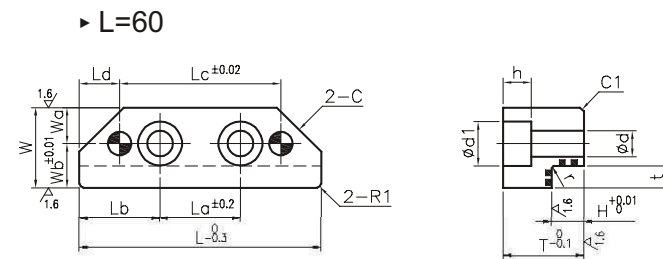


223.01
(Steel without Doewel Hole)

223.02
(Steel with Dowel Hole)

221.02
(Copper Alloy without Dowel Hole)

221.03
(Copper Alloy with Dowel Hole)



M Material: 223.01 - SKS3 Hatched Area
223.02 - with Graphite and to be Induction hardened
HRC53~58

221.02 - Copper alloy (SP2)
221.03 - Hatched Area with Graphite

Guide Rail

W	L	Wa	La	Lb	Lc	Ld	C	T	H	t	r	d	d1	h	Part Name	W	L
15	60	6	20	20	40	10	9	15	8	4.5	0.5	5.5	9.5	6	223.01 223.02 221.02 221.03	15	60
	80		12.5	35	80												
	100			55	100												
20	60	9	20	20	40	10	11	20	8	5.5	0.5	6.5	11	7		20	60
	80		15	50	20	80											
	100			70	40	100											
	120			45	60	120											
25	80	9	45	17.5	20	30	13	25	10	7.5	0.8	9	14	9		25	80
	100		65		40												100
	120		42.5		60												120
	140		52.5		80												140
30	120	11	40	20	40	40	16	30	15	11	0.8	11	18	11		30	120
	140		50		60										140		
	160		60		80										160		
	180		70		100										180		

W	e	H7
15	6	+0.012
20		0
25	8	+0.015
30		0

Order	part name	W	L
223.02	25	-	120