

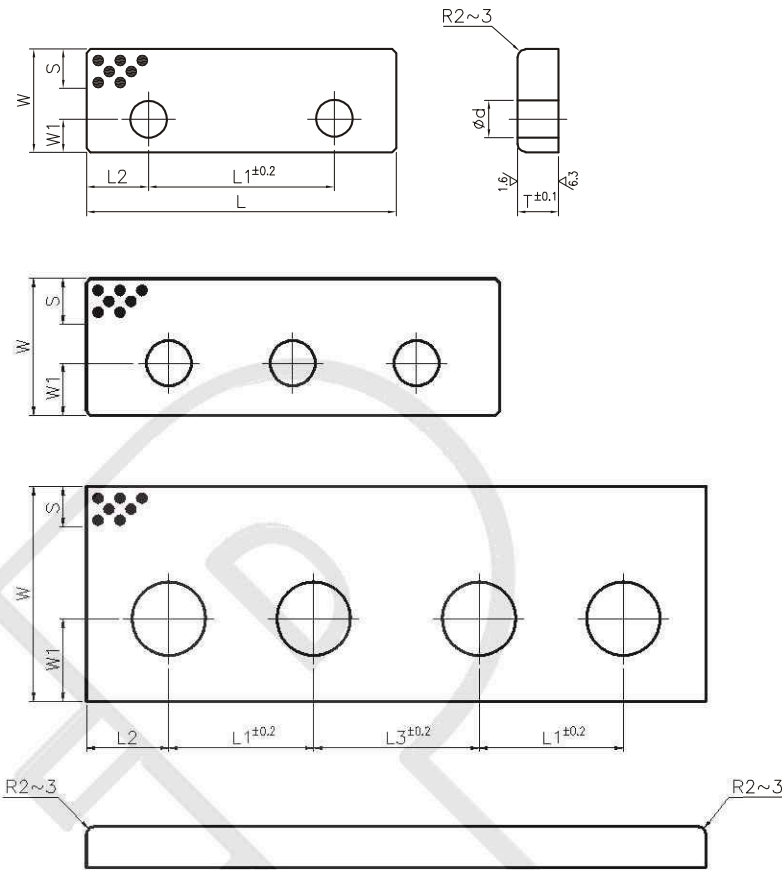


Cam Gib Plate

211.09
(Bronze with Graphite)

212.03
(FC with Graphite)

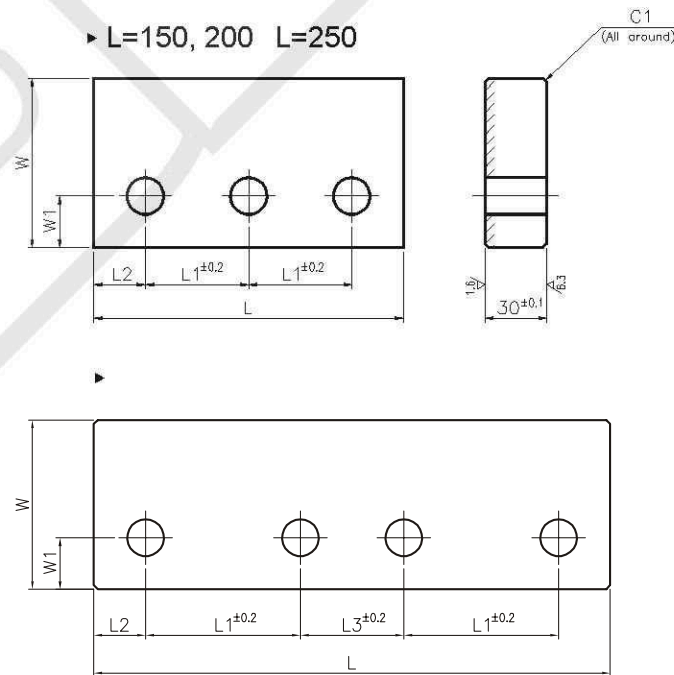
213.08
(Steel with Graphite)



M Material: 211.09 - Bronze with Graphite
212.03 - FC250 with Graphite
213.08 - S45C with Graphite **H** Hardness : HRC40 or more

214.14

► L=150, 200 L=250



M Material: Sintered
Hatched Area Sintered
Thickness 1.2mm or more
SS400 (base Plate)

Cam Gib Plate



T	L ₁	L ₂	L ₃	W ₁	S	d	Part Name	W	L							
10	45	15		8	7.5	9	211.09	25	75							
	50	25							100							
	75								125							
	45	15						33	75							
	50	100														
	75	125														
	100	150														
	75	200														
20	50	25		20	13	13	211.09 212.03 213.08	52	100							
	75								150							
			50												200	
									250							
30	50		-	25	22	18		211.09 212.03 213.08	72	100						
	75		150													
			200													
35	50		-		25				27	18	211.09 212.03 213.08	77	150			
	75		200													
			250													
40	50		-	25		32			18			211.09 212.03	82	150		
	75		200													
			250													
	50		-		105		150									
	75		50				200									
			250													

Order	part name	W	-	L
	211.09	32	-	75
	212.03	52	-	150
	212.08	82	-	250

L ₁	L ₂	L ₃	W ₁	d	Part Name	W	L
50	25	-	25	18	214.14	82	150
75		50					200
							250

Order	part name	W	-	L
	214.14	82	-	200

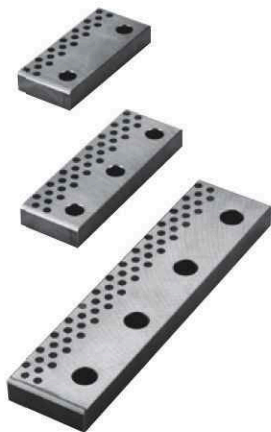


Cam Gib Plate

212.06
(FC with Graphite)

213.09
(Steel with Graphite)

211.18
(Bronze with Graphite)



Sliding Direction



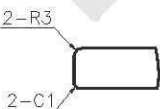
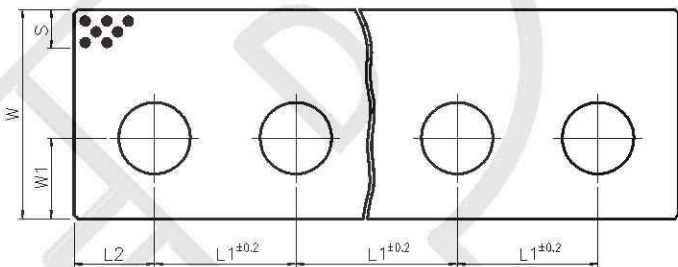
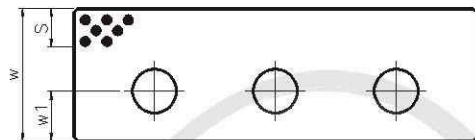
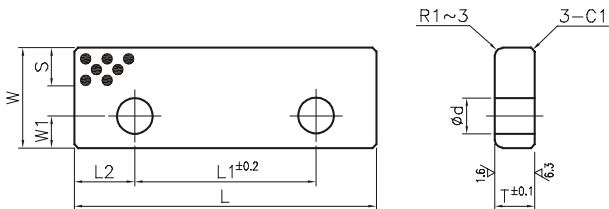
214.15



Sliding Direction

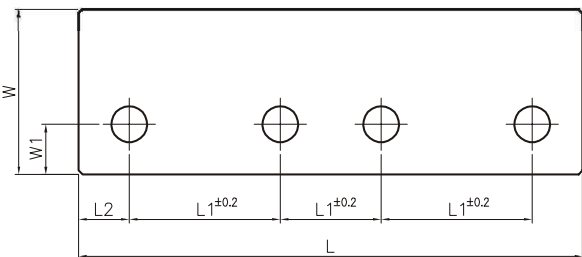
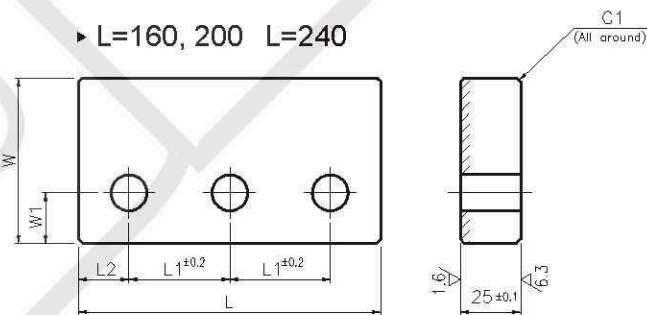


M Material: Sintered
Hatched Area Sintered
Thickness 1.2mm or more
SS400 (base Plate)



M Material: 212.06 - FC250 with Graphite
213.09 - S45C with Graphite
211.18 - Bronze with Graphite

► L=160, 200 L=240



Cam Gib Plate



T	W ₁	L ₁	L ₂	d	S	Part Name	W	L	
25	37.5	120	30	18	24	212.06	55	180	
	50	110	25		25		70	160	
		75			200				
		90			240				
28	60	75	25	22	30		212.06	85	200
		90	30						240
		80	30						300
		90	40						350
	70	75	25					100	200
		90	30						240
		80	30						300
		90	40						350
25	50	110	25	18	25	213.09	70	160	
		75						30	200
		90	30						240
28	60	75	25	22	30		213.09	85	200
		90	30						240
		80	30						300
		90	40						350
	70	75	25					100	200
		90	30						240
		80	30						300
		90	40						350
25	50	110	25	18	25		211.18	70	160
		75				30			200
		90	30						240
28	60	75	25	22	30	211.18		85	200
		90	30						240
		80	30						300
		90	40						350

Order -
212.06 70 - 160

W ₁	L ₁	L ₂	Part Name	W	L
50	50	30	214.15	70	160
	70				200
	85	35			240

Order -
214.15 70 - 160