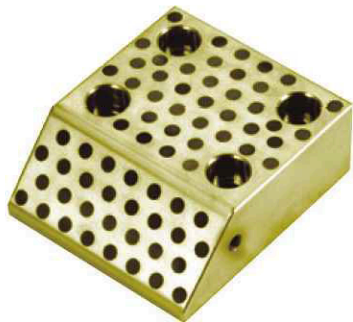


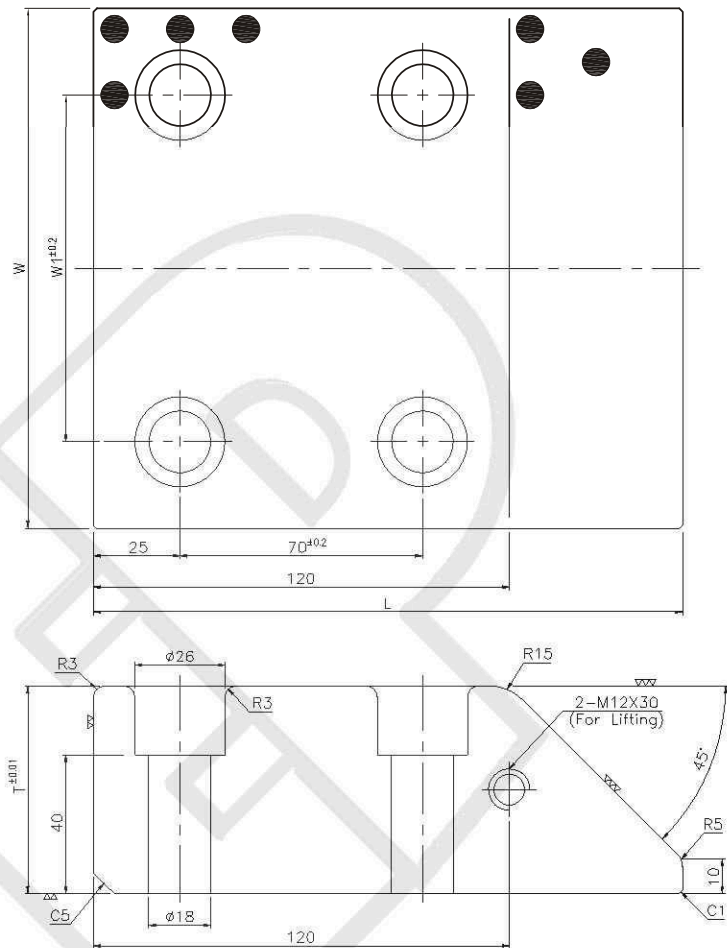


Cam Dwell Plate 45° Type and Bronze / Steel Type

241.01
(Bronze with Graphite)



Sliding Direction



M Material: Bronze with Graphite

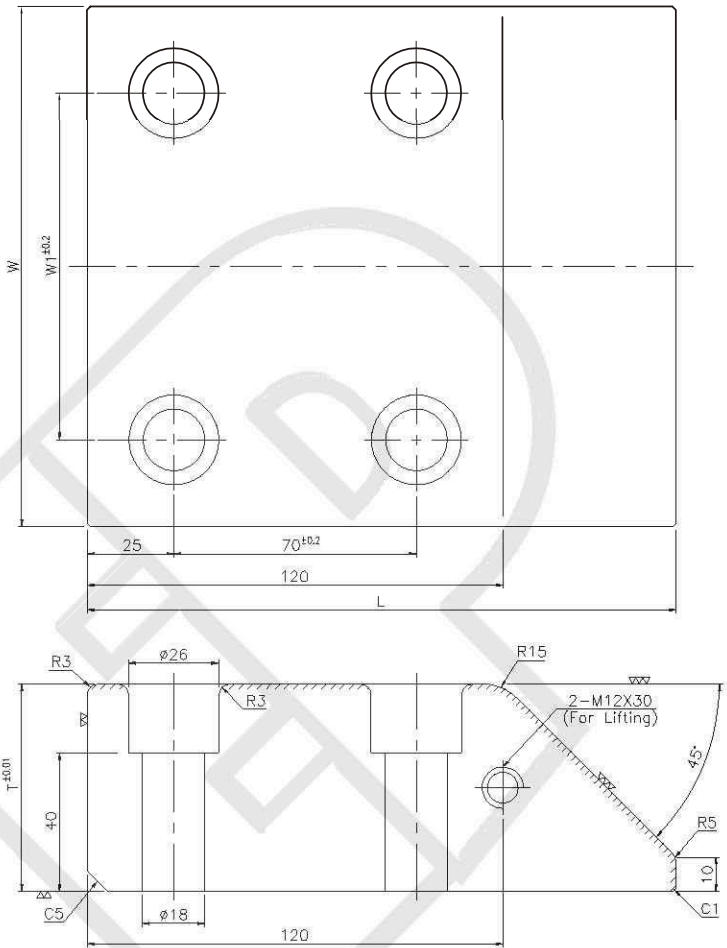
T	W ₁	Part Name	W	L
60	100	241.01	150	170
90				200
60	140	247.06	200	170
90				200

O Order -
241.01 200 - 170



Cam Dwell Plate 45° Type and Bronze / Steel Type

247.06
(Steel)



M Material: S45C

H Hardness : HRC55 or more
Area to be Induction Hardened (Hatched Area)