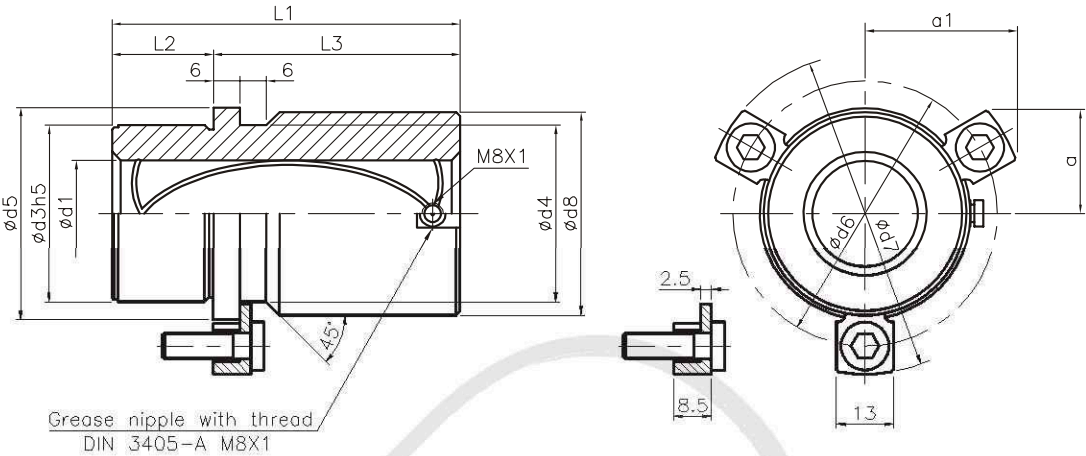




Headed Guide Bushes

128.01



M Material: Steel + Bronze (Oil groove)

Part Name	d1	d3	d4	d5	d6	d7	d8	a	a1	L1	L2	L3
128.01	19/20	32	32	40	52	64.7	39	20.7	30	35	23	12
										43	23	20
										59	23	36
	24/25	40	40	48	60	72.7	46	22.65	33.4	35	23	12
										59	23	36
										79	23	56
	30/32	48	48	56	67	79.7	53	24.4	36.4	42	30	12
										75	30	45
										93	30	63
	38/40	58	58	66	77	89.7	63	35.3	35.3	52	37	15
										82	37	45
										108	37	71
	48/50	70	70	80	91	103.7	77	40.2	40.2	65	47	18
										97	47	50
										127	47	80
	60/63	85	85	95	106	118.7	92	45.5	45.5	80	60	20
										116	60	56
										150	60	90
	80	105	105	118	129	141.7	115	54.5	54.5	80	60	20
										120	60	60
										150	60	90

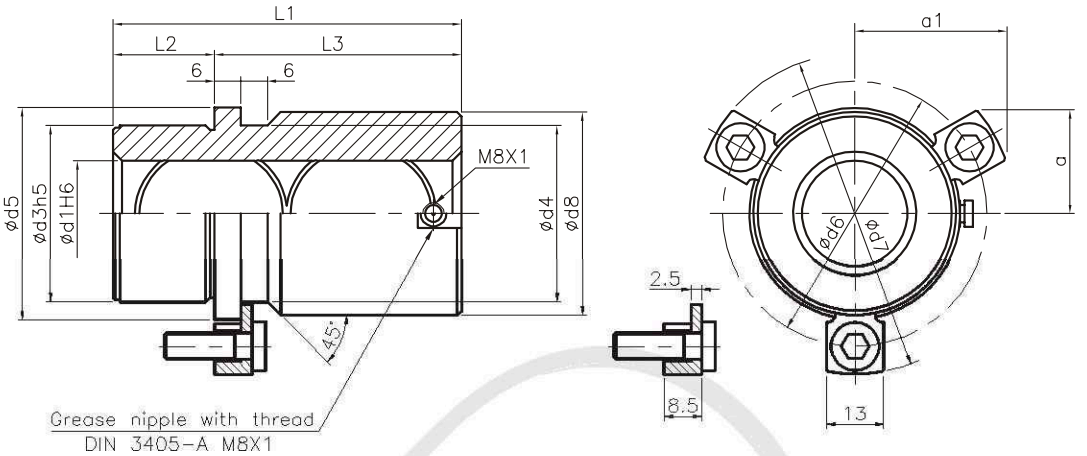
O Order -
211.06 50 - 200

BRAHMADEVI ENGINEERING PRODUCTS
Regd. Office :19, Martand Chowk, INDORE - 452 007 (M.P.) INDIA
Ph. : +91 - 731 - 2720243, Fax : +91 - 731 - 2721554
E-mail : ishan1809@yahoo.com, ruchir@diespares.com Website : diespares.com



Headed Guide Bushes

128.11



M Material: =Bronze + Oil groove

Part Name	d1	d3	d4	d5	d6	d7	d8	a	a1	L1	L2	L3
128.11	19/20	32	32	40	52	64.7	39	20.7	30	35	23	12
										43	23	20
										59	23	36
	24/25	40	40	48	60	72.7	46	22.65	33.4	35	23	12
										59	23	36
										79	23	56
	30/32	48	48	56	67	79.7	53	24.4	36.4	42	30	12
										75	30	45
										93	30	63
	38/40	58	58	66	77	89.7	63	35.3	35.3	52	37	15
										82	37	45
										108	37	71
	48/50	70	70	80	91	103.7	77	40.2	40.2	65	47	18
										97	47	50
										127	47	80
	60/63	85	85	95	106	118.7	92	45.5	45.5	80	60	20
										116	60	56
										150	60	90
	80	105	105	118	129	141.7	115	54.5	54.5	80	60	20
										120	60	60
										150	60	90

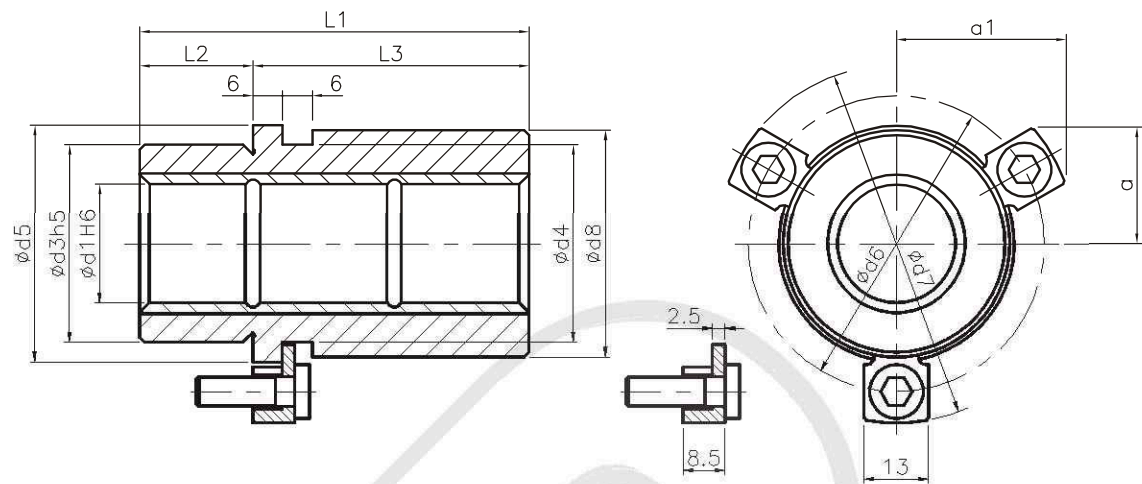
O Order -
211.06 50 - 200

BRAHMADEVI ENGINEERING PRODUCTS
Regd. Office :19, Martand Chowk, INDORE - 452 007 (M.P.) INDIA
Ph. : +91 - 731 - 2720243, Fax : +91 - 731 - 2721554
E-mail : ishan1809@yahoo.com, ruchir@diespares.com Website : diespares.com



Headed Guide Bushes

124.01



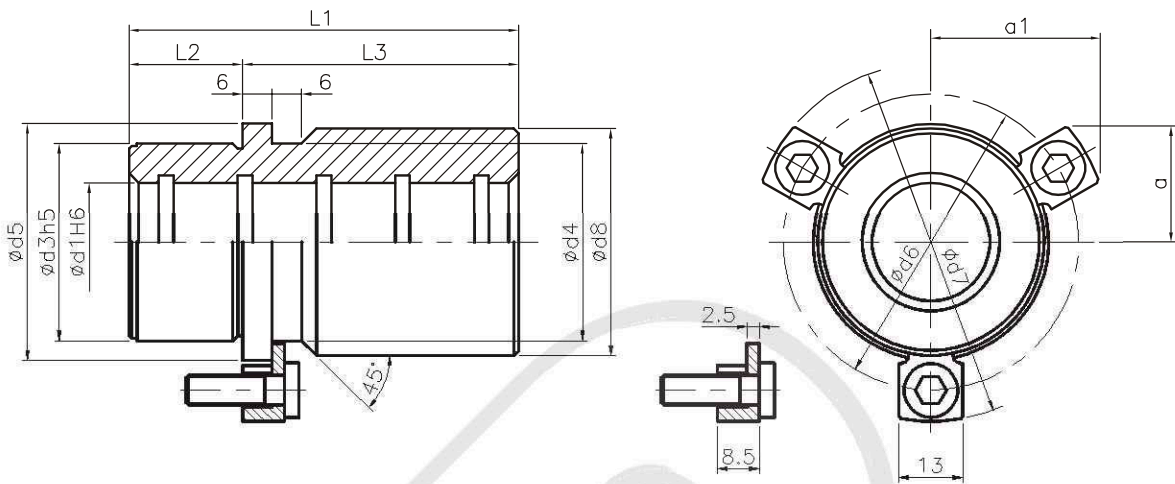
M Material: Steel + Sintered + Oil groove

Part Name	d1	d3	d4	d5	d6	d7	d8	a	a1	L1	L2	L3
124.01	19/20	32	32	40	52	64.7	39	20.7	30	35	23	12
										43	23	20
										59	23	36
	24/25	40	40	48	60	72.7	46	22.65	33.4	35	23	12
										55	30	25
										59	23	36
										79	23	56
	30/32	48	48	56	67	79.7	53	24.4	36.4	80	30	50
										42	30	12
										69	37	32
										75	30	45
	38/40	58	58	66	77	89.7	63	35.3	35.3	93	30	63
										93	37	56
										52	37	15
										79	47	32
	48/50	70	70	80	91	103.7	77	40.2	40.2	82	37	45
										108	37	71
										110	47	63
										65	47	18
	60/63	85	85	95	106	118.7	92	45.5	45.5	96	60	36
										97	47	50
										127	47	80
										131	60	71
	80	105	105	118	129	141.7	115	54.5	54.5	80	60	20
										116	60	56
										150	60	90
										80	60	20
										120	60	60
										150	60	90

Headed Guide Bushes



125.01



M Material: Bronze + Ring / GR

Part Name	d1	d3	d4	d5	d6	d7	d8	a	a1	L1	L2	L3
125.01	19/20	32	32	40	52	64.7	39	20.7	30	35	23	12
										43	23	20
										59	23	36
	24/25	40	40	48	60	72.7	46	22.65	33.4	35	23	12
										59	23	36
										79	23	56
										42	30	12
	30/32	48	48	56	67	79.7	53	24.4	36.4	75	30	45
										93	30	63
										52	37	15
										82	37	45
	38/40	58	58	66	77	89.7	63	35.3	35.3	108	37	71
										65	47	18
										97	47	50
										127	47	80
	48/50	70	70	80	91	103.7	77	40.2	40.2	80	60	20
										116	60	56
										150	60	90
										80	60	20
	60/63	85	85	95	106	118.7	92	45.5	45.5	120	60	60
										150	60	90
										80	60	20
										120	60	60
	80	105	105	118	129	141.7	115	54.5	54.5	150	60	90
										80	60	20
										120	60	60
										150	60	90