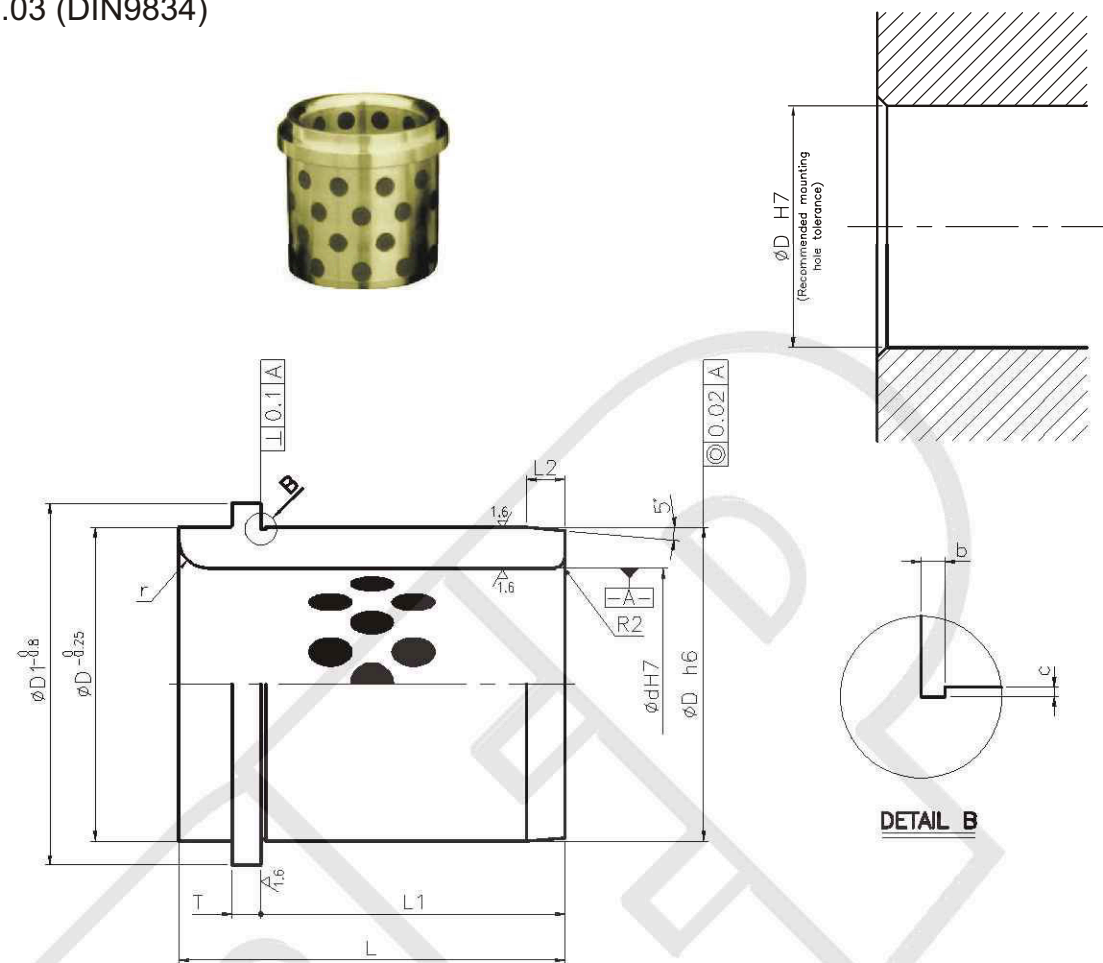


121.03 (DIN9834)



Part Name(Type)	d	H7	D	h6	L	D1	L1	L2	t	r	b×c	
9834-025	25	+0.021 0	32	0 -0.016	40	40	30	3	6.3	3	0.6×0.3	
9834-032	32	+0.025 0	40		50	50	40	4				
9834-040	40		50		63	63	50	5				
9834-050	50		63	0 -0.019	71	71	56	6.3		5		
9834-063	63	+0.030 0	80	0 -0.022	80	90	63	8	10	6	1.0×0.4	
9834-080	80		100		100	112	80	10		8		
9834-100	100		125		0 -0.025	125	140	106		12.5		10
9834-125	125		160		0 -0.029	160	180	132		16		12
9834-160	160	+0.040 0	200	0 -0.029	200	220	170	16		18		

Order

9834-063