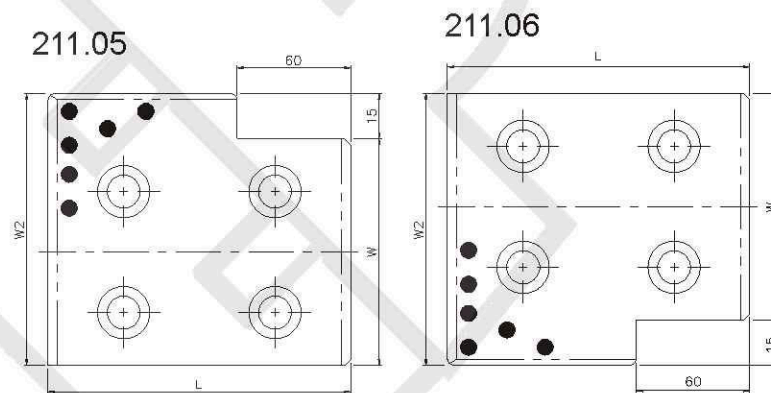
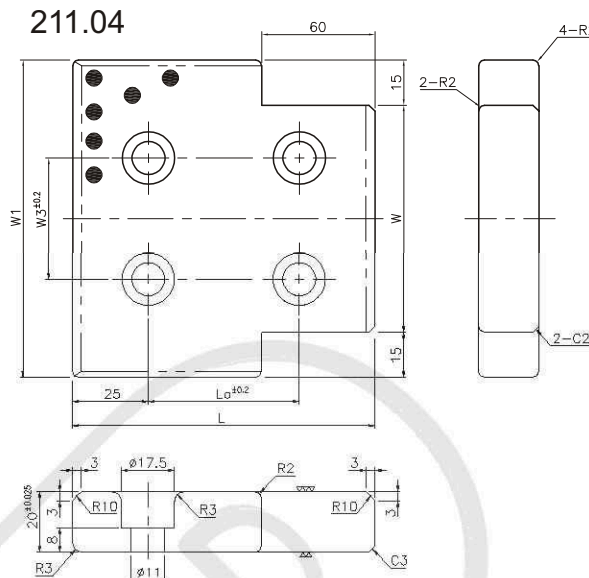


211.04  
211.05  
211.06



Sliding Direction

**M** Material: Bronze with Graphite

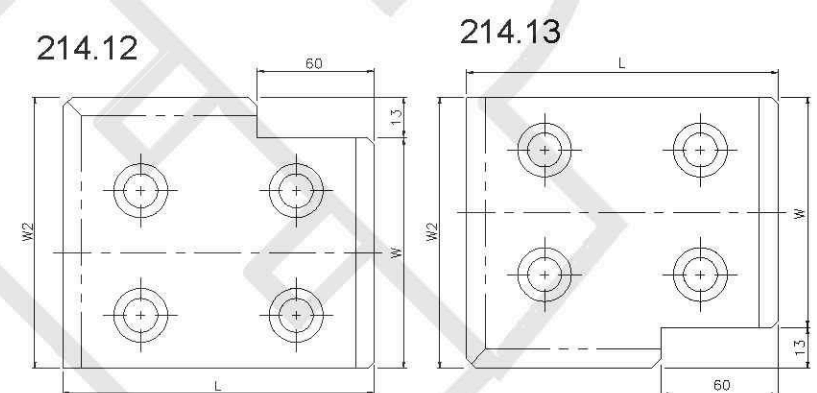
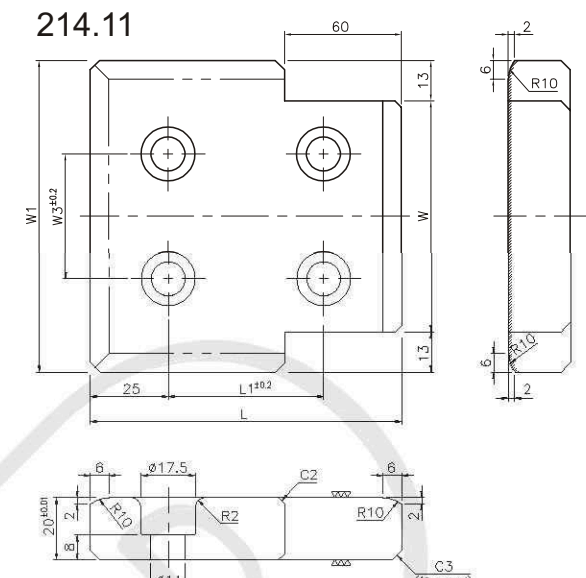
W <sub>1</sub>	W <sub>2</sub>	W <sub>3</sub>	La	Part Name	W	L
105	90	40	50	211.04 211.06 211.05	75	100
			75			125
			100			150
130	115	50	75		100	125
			100			150
155	140	75	100		125	150
			150			200
			200			250
180	165	100	150		150	200
			200			250

Order 

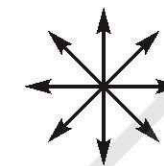
part name	W	—	L
211.04	125	-	200

## Cam Positive Return Plate

214.11  
214.12  
214.13



Sliding Direction



**M** Material: Sintered / Hatched Area Sintered  
Thickness 1.2mm or more / SS400 (base plate)

W(Actual Size)	W <sub>1</sub>	W <sub>2</sub>	W <sub>3</sub>	L <sub>1</sub>	Part Name	W(Nominal)	L
74	100	87	40	50	214.11 214.13 214.12	75	100
				75			125
				100			150
				150			200
				200			250
99	125	112	50	100		100	150
				150			200
				200			250
124	150	137	90	100		125	150
				150			200

Order	part name	W	-	L
214.11		75	-	125
214.13		100	-	200
214.12		125	-	200