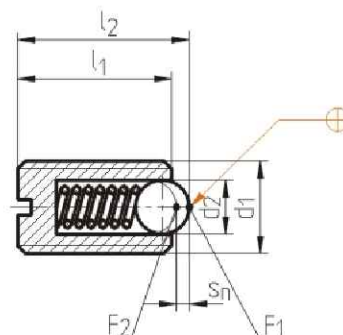


Z371 BALL PLUNGER

Material : 1.4305



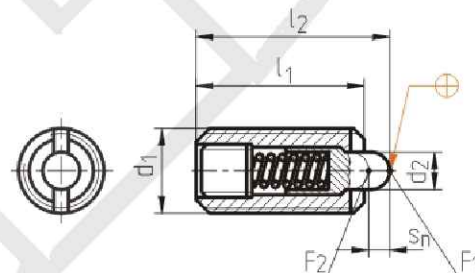
Type	max. °C	d2	Sn	F1 [N]	F2 [N]	l2	d1	l1
Z371/4 x 9	250	2.5	0.64	6.0	11.6	9.8	M4	9
5 x 12		3	0.72	8.8	13.3	12.9	M5	12
6 x 14		3.5	0.8	11.2	15.1	15.0	M6	14
8 x 16		5	1.2	18.5	29.5	17.5	M8	16
10 x 19		6	1.3	23.9	43.0	21.0	M10	19
12 x 22		8	2.0	35.9	59.8	24.5	M12	22
16 x 24		10	2.4	74.0	101.6	27.0	M16	24



Order: Type No. x Pcs
Z371/4x9 x 10

Z372 SPRING PLUNGER

Material : 1.0718



Type	max. °C	d2	Sn	F1 [N]	F2 [N]	l2	d1	l1
Z372/3 x 12	250	1.0	0.8	1.7	2.8	13.0	M3	12
4 x 15		1.5	1.2	5.0	12.0	16.5	M4	15
5 x 18		2.4	1.8	7.0	16.0	20.3	M5	18
6 x 20		2.7	2.0			22.5	M6	20
8 x 22		3.5	2.1	9.0	28.0	25.0	M8	22
10 x 22		4.0					M10	22
12 x 28		6.0	3.2	15.0	44.0	32.0	M12	28
16 x 32		7.5	4.0	45.0	80.0	37.0	M16	32
20 x 40		10.0	5.6	70.0	112.0	47.0	M20	40
24 x 52		12.0	8.0	80.0	144.0	62.0	M24	52



Order: Type No. x Pcs
Z372/3x12 x 10