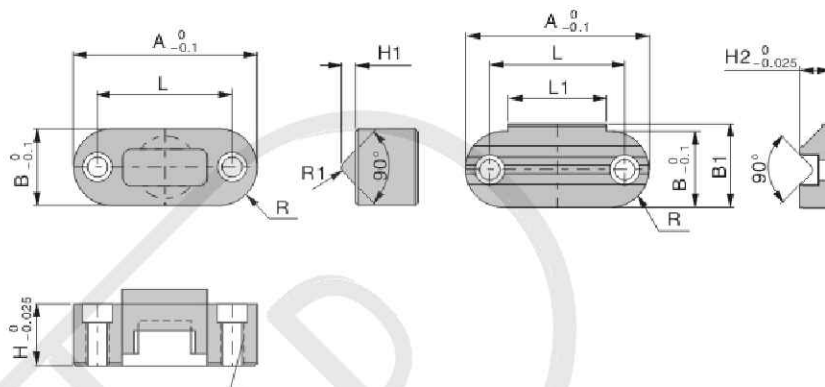


# Slide Retainer Series

## SLK25A-50A Slide Retainer

Material : SKH51  
Hardness : 58HRC

It is easy to install it into slider of mold base, cleverly hidden in the caging device.



Type	A	B	H	H1	H2	L	L1	R	R1	B1	Mounting screws	(kgf) Max. holding weight
SLK 25A	1.494	.620	.499	.117	.249	1.1	.80	.312	.062	.68	#6-32x1/2	11.25
	37.95	15.75	12.67	2.97	6.32	27.94	20.32	7.92	1.57	17.27	#6-32x1/4	
SLK 50A	2.292	.996	.86	.171	.385	1.65	1.10	.498	.098	1.058	1/4-20x1"	22.5
	58.22	25.30	21.84	4.34	9.78	41.91	20.32	12.65	2.49	26.87	1/4-20x3/8	



Order: Type No. x Pcs  
SLK 25A x 10

## Example

