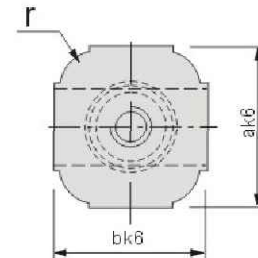
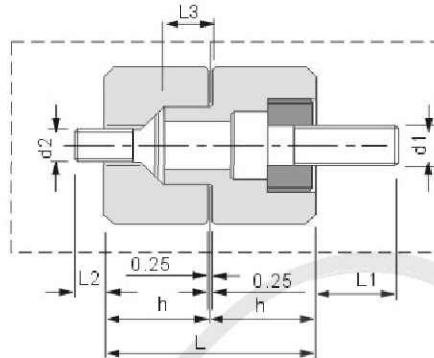


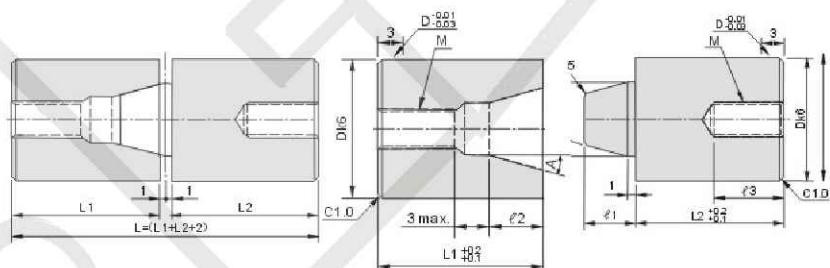
Z08 Straight Block sets

Mat : 1.2343 50~56 HRC



Type	Size									
	r	d1	d2	l1	l2	l3	l	h	a	b
Z08/20x20	4	M5	M4	12	4	3.5	28	14	20	20
Z08/25x25	5	M6	M5	13	8	5.5	32	16	25	25
Z08/32x32	6	M8	M6	15	12	7.5	36	18	32	32
Z08/40x40		M10	M8	17	10	9.5	45	22.5	40	40

TPNV Round taper interlock



Type	D _{k6}	A	V	L	L1	L2	l1	l2	l3	M
TPNV	13	5°	8.5	30	14	14	6	5	10	M4
	16		10	30	14	14	6	5	10	M5
	20		13	40	19	19	9	8	12	M6
	25		16	50	24	24	12	11	16	M8
	30		20	60	29	29	15	14	20	M10
	32		20	60	29	29	15	14	20	M10
	35		24	70	34	34	18	17	24	M12
	42		30	80	39	39	24	23	24	M12