

# Positioning Components

## TBF

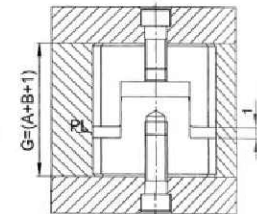
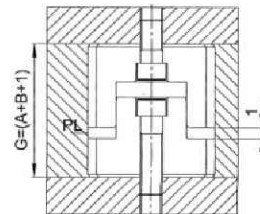
### Positioning straight block sets

Mat : YK30 56~60 HRC

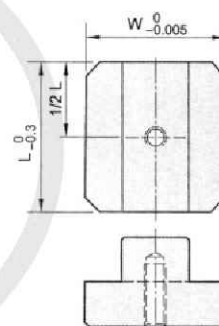
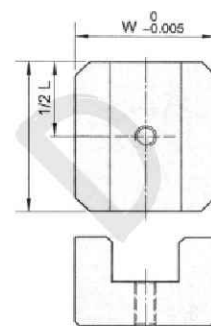


TBF20  
TBF30

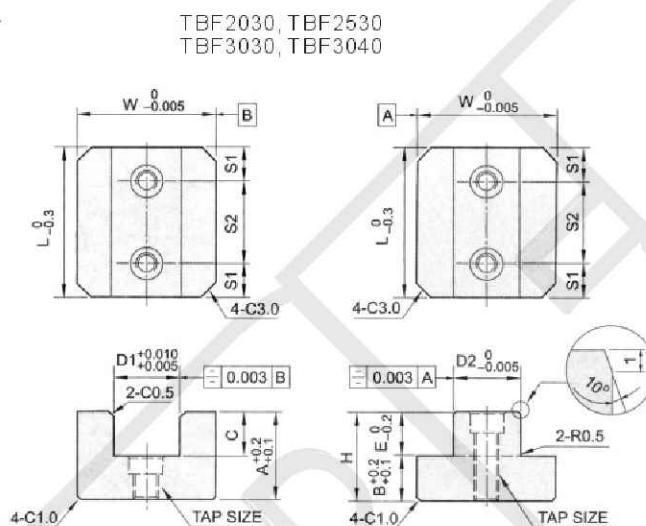
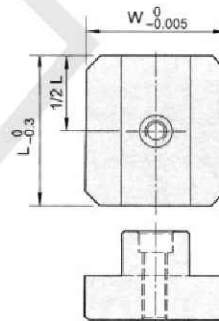
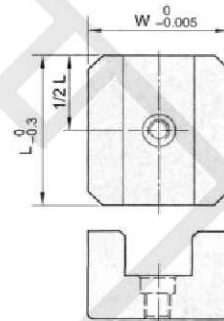
TBF16



TBF1616  
TBF1620



TBF2025  
TBF2525



Type No.	W	L	A	B	C	D1	D2	E	G	H	S1	S2	TAP SIZE	SHCS
TBF1616	16	16	17	8	9	9	9	8	26	16	-	-	M4	M4
TBF1620		20									-	-		
TBF2025	20	25	17	8	9	12	12	8	26	16	-	-	M4	M3
TBF2030		30									7.5	7.5		
TBF2525	25	25	21	10	11	15	15	10	32	20	-	-	M5	M4
TBF2530		30									7.5	7.5		
TBF3030	30	30	23	12	13	17	17	12	36	24	7.5	7.5	M6	M5
TBF3040		40									10	10		