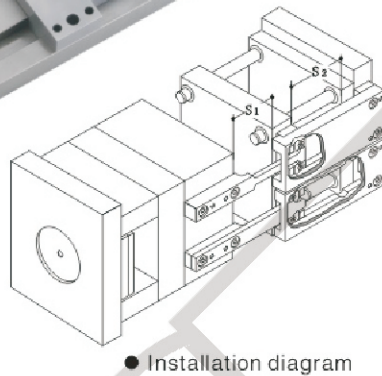
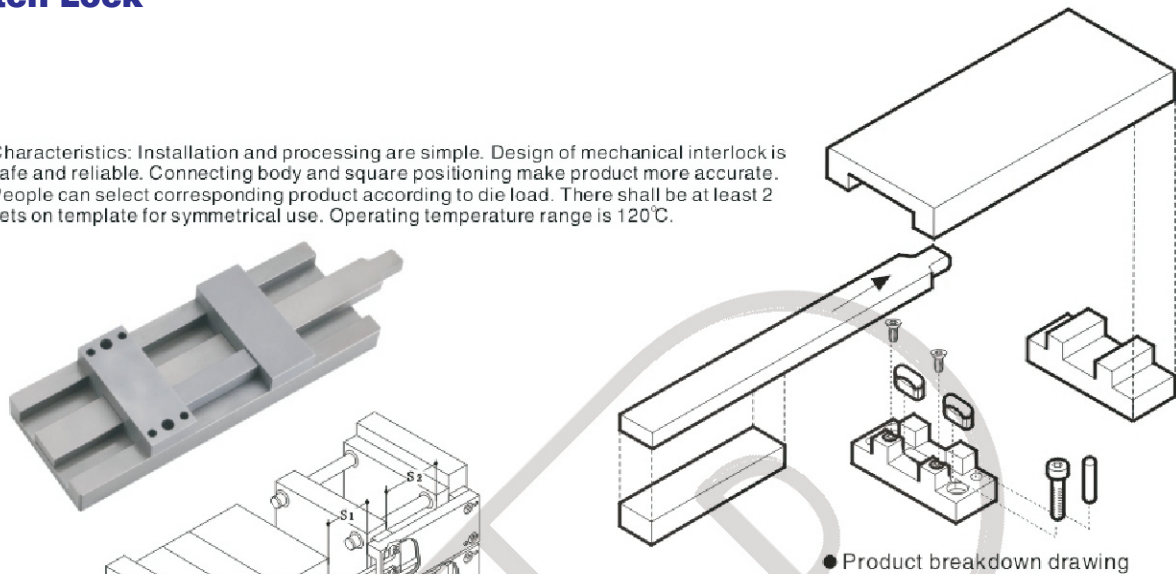
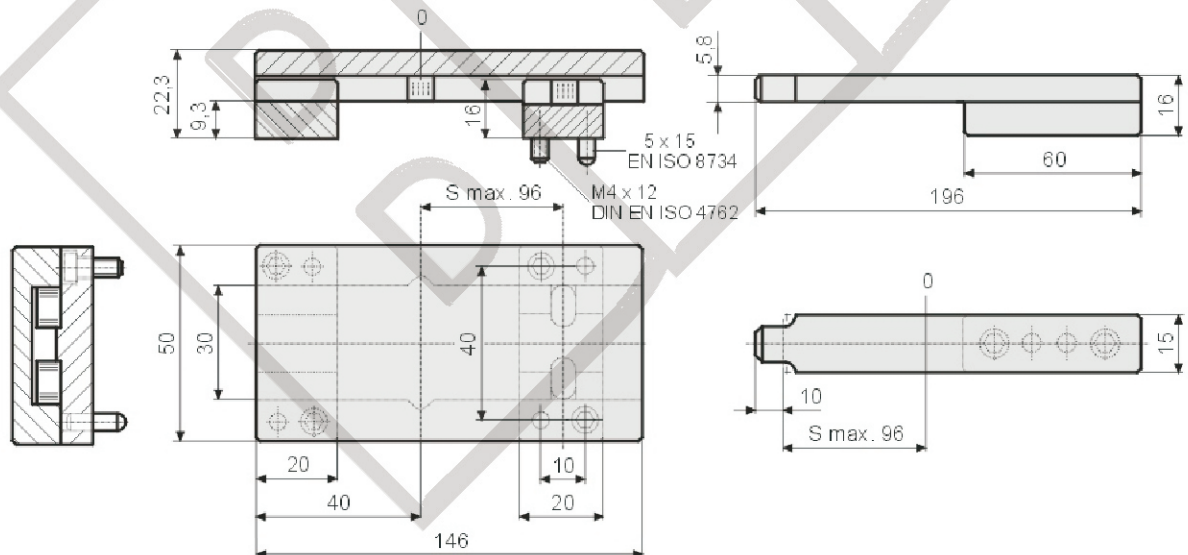


Z 6-1, Z 6-2 Latch Lock

Characteristics: Installation and processing are simple. Design of mechanical interlock is safe and reliable. Connecting body and square positioning make product more accurate. People can select corresponding product according to die load. There shall be at least 2 sets on template for symmetrical use. Operating temperature range is 120°C.



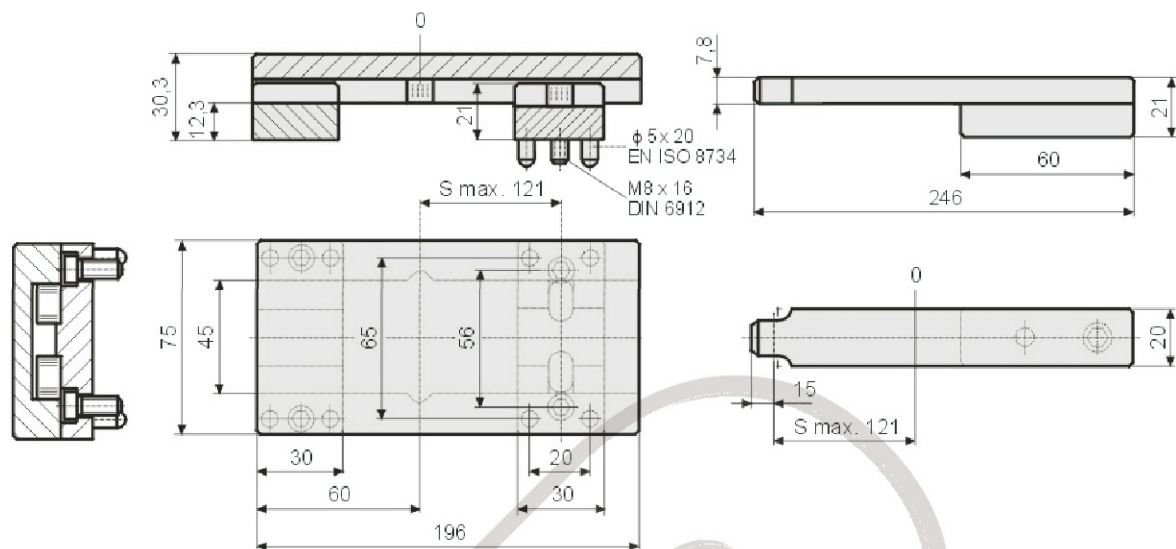
※Precautions: It is required to calculate the same stroke for symmetrical installation during die processing. Otherwise, it will cause unbalance force of single set of mode locking buckle and breakage of component.



Type
Z 6-1

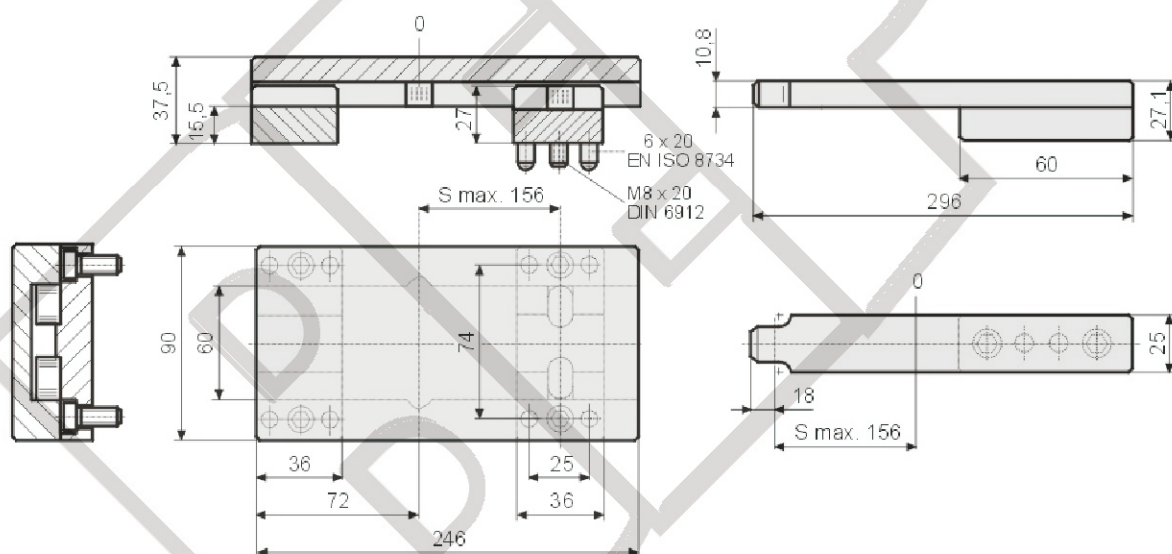
Order: Type No. x Pcs
Z 6-1 x 10

Mould Lock Components



Type
Z 6-15

Order: Type No. x Pcs
Z 6-15 x 10



Type
Z 6-2

Order: Type No. x Pcs
Z 6-2 x 10

Example

