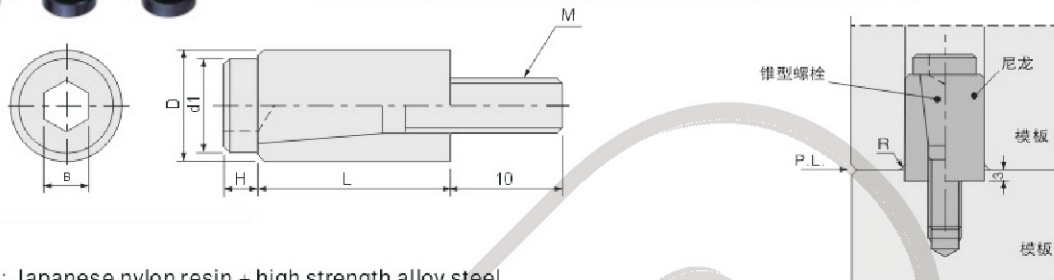


Mould Lock Components

PL Parting Lock



It can adjust friction between template and nylon sleeve through locking taper bolt. Special nylon material is used for the product. Thus, the product has good abrasion resistance and heat resistance. Although heat resistant temperature of nylon sleeve is 150°C, it will cause durability of nylon sleeve reduce for continuous locking stress of taper bolt in actual use process. Please use it below 80°C.



Material: Japanese nylon resin + high strength alloy steel

Type	Size					
	D	d1	M	B	L	H
PL 10	10	8.5	M5	4	18	3
PL 12	12	11	M6	5	20	3.5
PL 13	13					
PL 16	16	14	M8	6	25	4
PL 20	20	16	M10	8	30	5

Installation method:

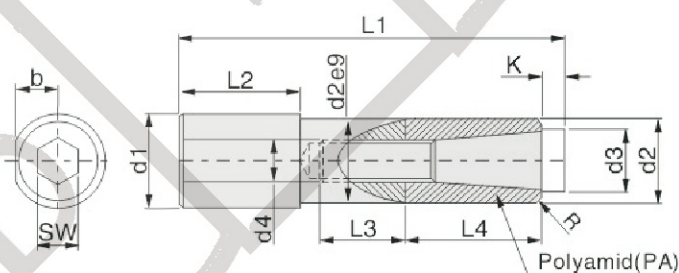
Installation method: Embed nylon sleeve in template of moving die about 3mm. Implement rough finishing on inner surface of template hole of fixed die and implement filleting R of insertion mouth of template surface. If chamfer C is implemented, its durability will reduce.

The basis of installation aperture tolerance shall be according to JISH7.



Order: Type No. x Pcs
PL 10 x 10

Z172 Parting Lock

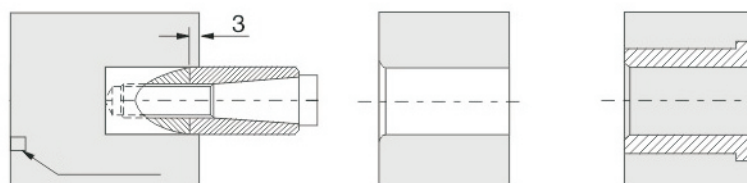


Type	d2	d1	L2	L1	d3	K	L4	b	SW	d4	L3	R	Max.C
Z172/10	10	12	22	51	8.5	2	16	5	4	M5	12	1	120
Z172/16	16	18	23	72	13	4	25	8	6	M8	14	1.5	120



Order: Type No. x Pcs
Z172/10 x 10

Example



BRAHMADEVI ENGINEERING PRODUCTS

Regd. Office :19, Martand Chowk, INDORE - 452 007 (M.P.) INDIA
Ph. : +91 - 731 - 2720243, Fax : +91 - 731 - 2721554
E-mail : ishan1809@yahoo.com, ruchir@diepares.com Website : www.diepares.com