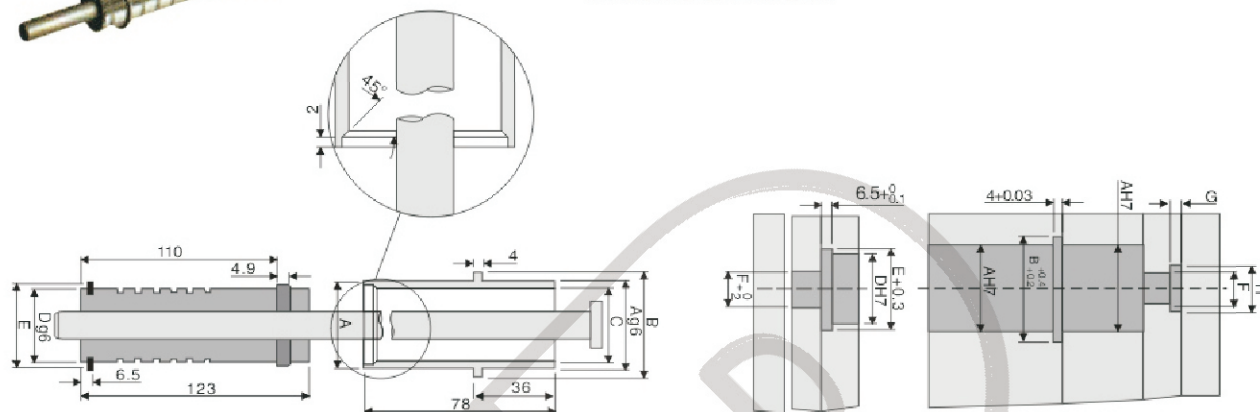


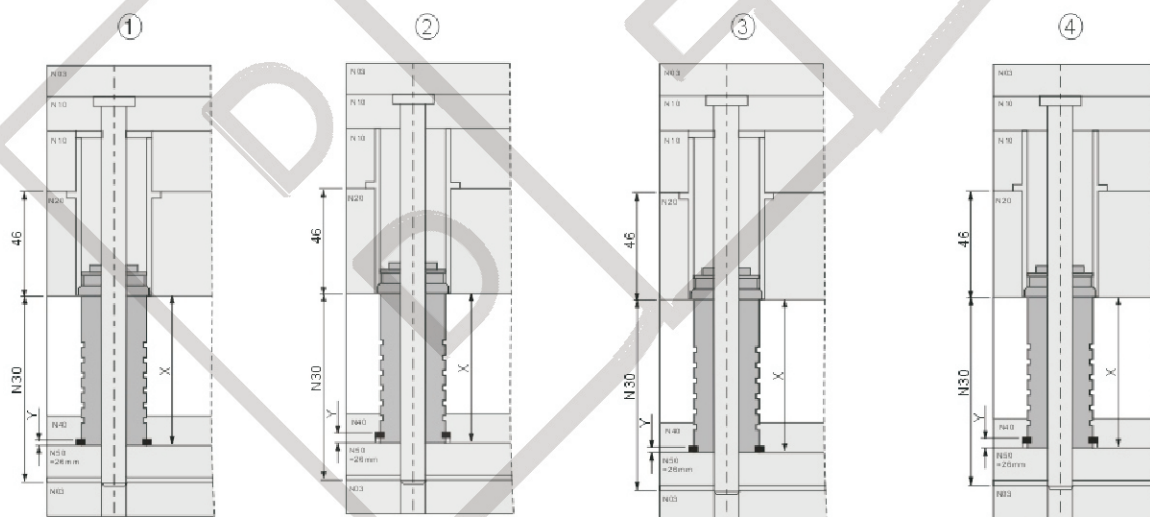
### EER Early Ejector return



Independent design, low cost because the precision components have long service life, these device can prevent the mold components' mechanical dampnification.



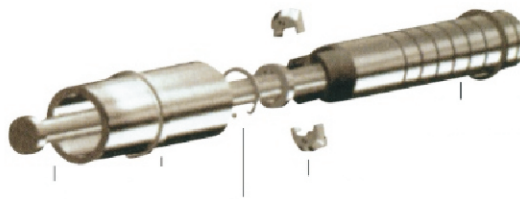
Type	Size							
	A	B	C	D	E	F	G	H
EER 100E	32	35	24.2	24	27	10	5	17
EER 101E	42	46	32.2	32	36	16	7	24



Example	①		②		③		④	
N30	X	Y	X	Y	X	Y	X	Y
66	36	2.5	40	6.5	46	2.5	50	6.5
86	56		60		66		70	
106	76		80		86		90	
126	96		100		106		110	

# Mould Lock Components

## EER Early Ejector return

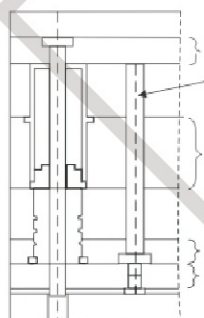


EERB-EERS-EE-EER-RK E

EERB100 E	EERS100 E	EE 10 400	EER 100 RK E
EERB101 E	EERS101 E	EE 16 400	EER 101 EK E

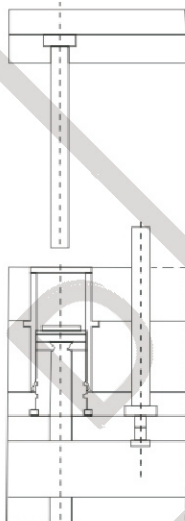
## Example

ViewA:



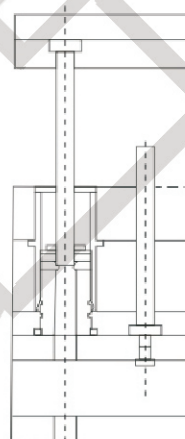
A

ViewB:



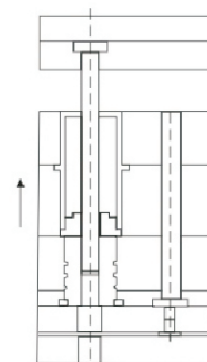
B

ViewC:

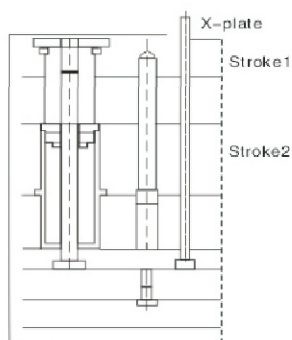


C

ViewD:



D



※InstallAITon for Ejector pin travel beyond stripper plate.

Stripper plate moves forward until cam fingers slip outward into counterbore in bushing and ejector plate continues to travel.

### BRAHMADEVI ENGINEERING PRODUCTS

Regd. Office :19, Martand Chowk, INDORE - 452 007 (M.P.) INDIA

Ph. : +91 - 731 - 2720243, Fax : +91 - 731 - 2721554

E-mail : ishan1809@yahoo.com, ruchir@diespares.com Website : [www.diespares.com](http://www.diespares.com)