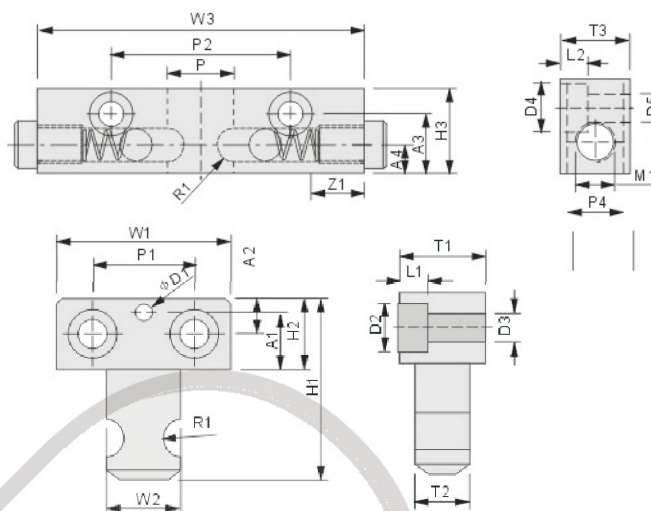
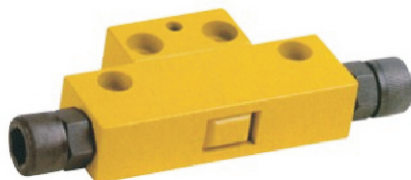


Mould Lock Components

DTP 08 A Latch Lock

Surface treatment: Yellow paint drying



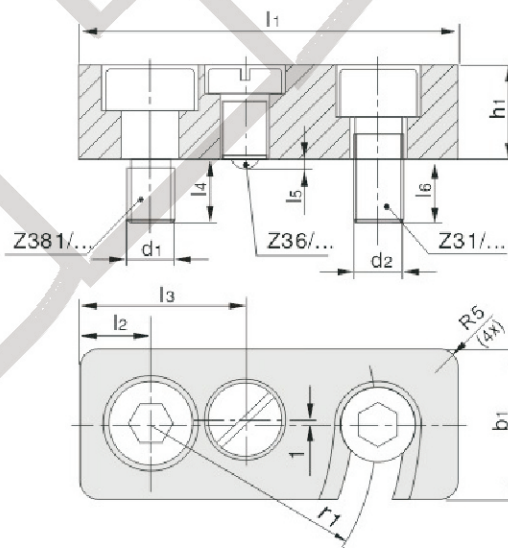
Type	Size													
	A ₁	A ₂	A ₃	A ₄	D ₁	D ₂	D ₃	D ₄	D ₅	H ₁	H ₂	H ₃	L ₁	L ₂
DTP08A	6	12	21	10	∅ 5	∅ 10.5	∅ 6.5	∅ 11	∅ 6.5	48	20	28	6.5	6.5
DTP08B	20	12.5	23	11	∅ 5	∅ 17	∅ 10	∅ 17	∅ 10	62.5	25	33	10	10

Type	Size												
	P ₁	P ₂	P ₃	P ₄	R ₁	T ₁	T ₂	T ₃	W ₁	W ₂	W ₃	Z ₁	M ₁
DTP08A	25	60	18	12.5	R4.25	20.5	12	20.5	40	17.5	86	20	M12x1.75
DTP08B	35	70	26	20	R6.5	30	19.5	25	60	25.5	127.5	21	M14x2.0



Order: Type No. x Pcs
DPT08A x 10

Z73 Latch Lock



Nr./No.	Z381/...	Z31/...	Z36/...	d ₁	d ₂	r ₁	l ₂	l ₃	l ₄	l ₅	l ₆	h ₁	b ₁	l ₁
Z73/ 12x20x50	Z381/ 6x6	Z31/ 6x14	Z36/ 5x12	M6	M6	30	10	24	9	0.9	8	12	20	50
16x25x63	8x10	8x18	8x16	M8	M8	38	13	30	11	1.5	11	16	25	63
20x32x80	10x12	10x22	10x20	M10	M10	48	15	35	13	2	13	20	32	80



Order: Type No. x Pcs
Z73/ 12x20x50 x 10

BRAHMADEVI ENGINEERING PRODUCTS

Regd. Office :19, Martand Chowk, INDORE - 452 007 (M.P.) INDIA
Ph. : +91 - 731 - 2720243, Fax : +91 - 731 - 2721554
E-mail : ishan1809@yahoo.com, ruchir@diespares.com Website : www.diespares.com