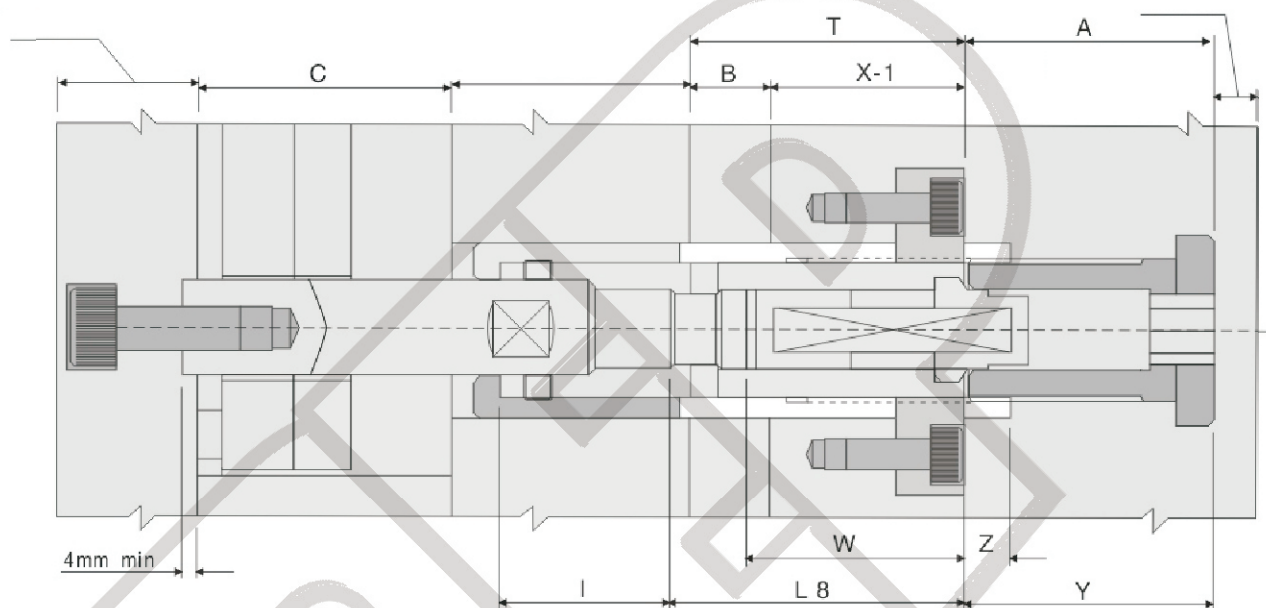


DDKL Internal latch lock



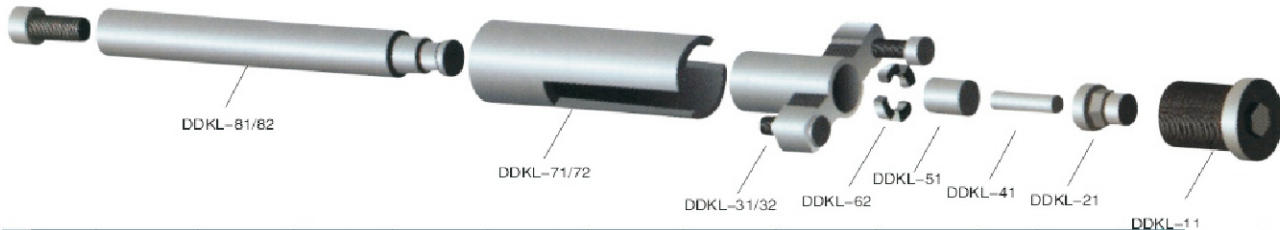
Its unique internal design apply to kinds of mold base and mold plates, Its components made of vulcanized steel to make sure long service life. plug device is eqsy to be installed timely. latch lock's internal installation can prevent the conflict between joints and external components.



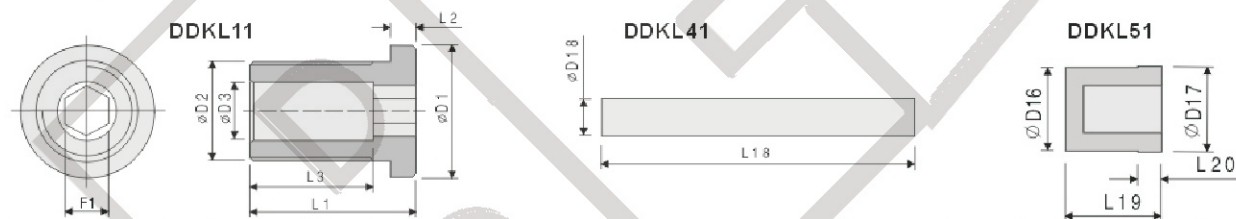
		Min./Max.			(kgf)		L 8	W	Y	Z
					Static	Dynamic				
28	DDKL2811	5- > 30	140	296	1000	100	40	23 ± 0.1	22- > 35	10 ^{+0.04} ₀
	DDKL2812		250							
	DDKL2821	30- > 55	140							
	DDKL2822		250							
34	DDKL3411	6- > 41	160	396	2000	200	51	32 ± 0.1	27- > 47.6	12 ^{+0.04} ₀
	DDKL3412		280							
	DDKL3421	41- > 76	160							
	DDKL3422		280							
45	DDKL4511	12- > 58	200	596	3000	380	68	43 ± 0.1	35- > 60	16 ^{+0.04} ₀
	DDKL4512		310							
	DDKL4521	58- > 104	200							
	DDKL4522		310							

Mould Lock Components

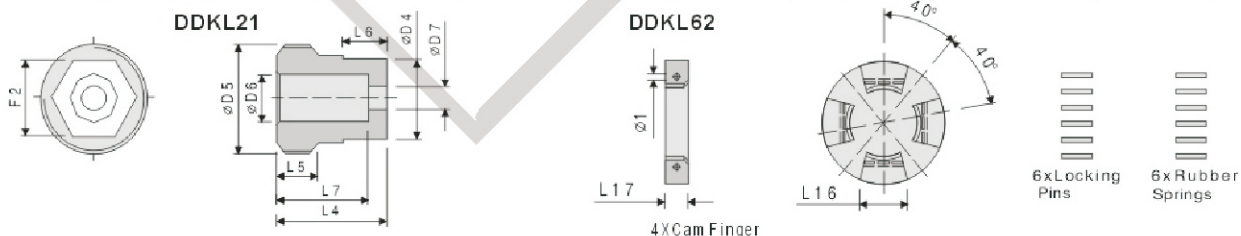
DDKL Internal latch lock



		DDKL11	DDKL21	DDKL31	DDKL32	DDKL62	DDKL41	DDKL51	DDKL71/72		DDKL81/82	
28	DDKL2811	DDKL-2011	DDKL-2021	DDKL-2031	DDKL-2032	DDKL-2062	DDKL-2041	DDKL-2051	DDKL-2071	5-30	DDKL-2081	140
	DDKL2812										DDKL-2082	250
	DDKL2821								DDKL-2072	30-55	DDKL-2081	140
	DDKL2822										DDKL-2082	250
34	DDKL3411	DDKL-3011	DDKL-3021	DDKL-3031	DDKL-3032	DDKL-3062	DDKL-3041	DDKL-3051	DDKL-3071	6-41	DDKL-3081	160
	DDKL3412										DDKL-3082	280
	DDKL3421								DDKL-3072	41-76	DDKL-3081	160
	DDKL3422										DDKL-3082	280
45	DDKL4511	DDKL-4011	DDKL-4021	DDKL-4031	DDKL-4032	DDKL-4062	DDKL-4041	DDKL-4051	DDKL-4071	12-58	DDKL-4081	200
	DDKL4512										DDKL-4082	310
	DDKL4521								DDKL-4072	58-104	DDKL-4081	200
	DDKL4522										DDKL-4082	310



		D1	D2	D3	L1	L2	L3	F1		D15	L18			D16	D17	L19	L20
DDKL2011		28	M22x1.25	13.5	34	5	26	10	DDKL2041	6.5	56	DDKL2051		12.3	12.9	15	3
DDKL3011		33	M26x1.50	16	46	6	35	12	DDKL3041	8	70	DDKL3051		14.4	15.4	23	5
DDKL4011		42	M34x1.50	18.4	59	10	42	14	DDKL4041	9.7	90	DDKL4051		19.4	20.4	32	7

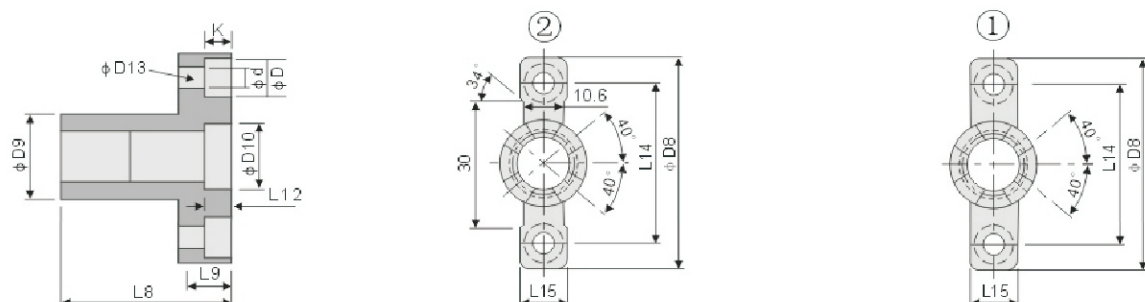


		D4	D5	D6	D7	L4	L5	L6	L7	F2			L16	L17
DDKL2021		12.6	M16x1	6.8	2.6	18	7	7	15	11	DDKL2062		5.8	4.2
DDKL3021		15	M19x1	8.3	3	21	8	8	17	13	DDKL3062		7.2	4.8
DDKL4021		17.2	M24x1	10	3.5	25	10	9	21	15	DDKL4062		9	6

BRAHMADEVI ENGINEERING PRODUCTS

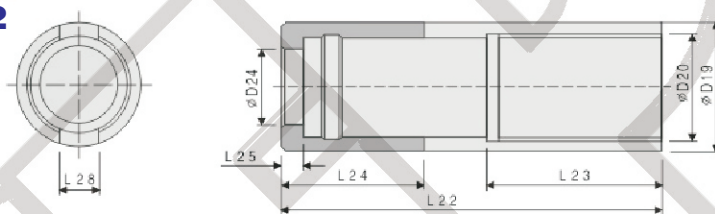
Regd. Office : 19, Martand Chowk, INDORE - 452 007 (M.P.) INDIA
Ph. : +91 - 731 - 2720243, Fax : +91 - 731 - 2721554
E-mail : ishan1809@yahoo.com, ruchir@dieaspares.com Website : www.dieaspares.com

DDKL 31 - DDKL 32



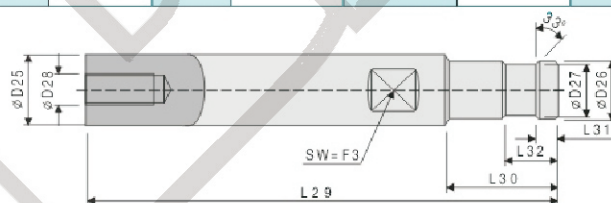
	(+DKL62)	D8	D9	D10	L8	L9	L12	L14	L15	R1	D13			
											Ø d	Ø D	K	Metric S.H.C.S
DDKL2031 ②	DDKL2032 ②	54	20.6	M16x1	40	13	7	40	12.6	2.5	6.8	10.4	6.8	M6x1
DDKL3031 ①	DDKL3032 ①	60	24.4	M19x1	51	15	8	46						
DDKL4031 ①	DDKL4032 ①	78	32.4	M24x1	38	20	10	60	17	4	8.4	13.7	8.5	M8x1.25

DDKL 71 - DDKL 72



			L22	D19	D20	D24	L23	L24	L25	L28
DDKL 2071	5-30	86	28	M22x1.25	16	37	31.5	6	10.8	
DDKL 2072	30-55	111								
DDKL 3071	6-41	146	34	M26x1.25	19	49	41	7	12.8	
DDKL 3072	41-76	152								
DDKL 4071	12-58	198	45	M34x1.5	26	65	56	10	17.3	
DDKL 4072	58-104									

DDKL 81 - DDKL 82



		L29	D25	D26	D27	L30	L31	L32	F3	D28
DDKL 2081	140	16	12.4	9.8	21	4	6.7	13	M8x1.25	
DDKL 2082	250									
DDKL 3081	160	19	14.5	11.7	24	4.6	7.6	15	M10x1.5	
DDKL 3082	280									
DDKL 4081	200	26	19.5	15.9	31	5.5	9.5	22	M12x1.75	
DDKL 4082	310									