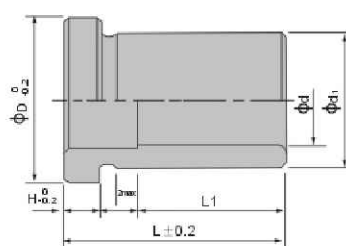


Extrusion Series

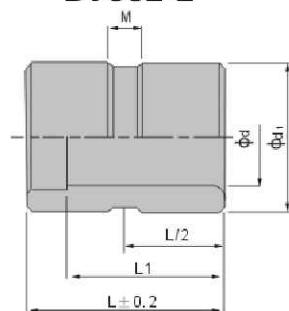
Guide Bush



BT532-1



BT532-2



Material	Hardness
SUJ2	HRC60° ± 2°

d		d1		BT532-1		BT532-2	
				D	H	M-L20	M-L21
10	+0.009 0	14	+0.018 +0.017	—	—	—	—
12	+0.017 +0.006	18		22	5	4	4
16		25	+0.021 +0.008	30	6 (8)		6
20	+0.020 +0.007	30		35	8	—	
25		35	40				
30		42 (40)	+0.025 +0.009	47 (45)	10		10
35	48 (45)	54 (50)					
40	+0.025 +0.009	55 (50)	+0.030 +0.011	61 (60)	12		
50		70		76 (75)			
60		80		86 (85)			15
70		90		96 (95)			
80		100		106 (105)			

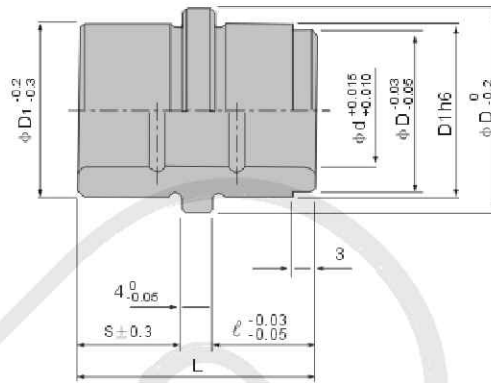
Guide Bush

L \ d d1	10	12	16	20	25	30	35	40	45	50	60	70	80
	14	18	25	30	35	40	45	55	60	70	80	90	100
14		●	●	●	●	●	●						
19		●	●	●	●	●	●	●	●	●			
24		●	●	●	●	●	●	●	●	●			
29		●	●	●	●	●	●	●	●	●	●		
34		●	●	●	●	●	●	●	●	●	●		
39		●	●	●	●	●	●	●	●	●	●		
44		●	●	●	●	●	●	●	●	●	●	●	
49		●	●	●	●	●	●	●	●	●	●		
54			●	●	●	●	●	●	●	●	●		
59			●	●	●	●	●	●	●	●	●	●	●
64			●	●	●	●	●	●	●	●	●		
69			●	●	●	●	●	●	●	●	●		
74			●	●	●	●	●	●	●	●	●		
79			●	●	●	●	●	●	●	●	●	●	●
84			●	●	●	●	●	●	●	●	●		
89			●	●	●	●	●	●	●	●	●		
94			●	●	●	●	●	●	●	●	●		
99			●	●	●	●	●	●	●	●	●	●	●
104			●	●	●	●	●	●	●	●	●		
109			●	●	●	●	●	●	●	●	●		
114			●	●	●	●	●	●	●	●	●		
119				●	●	●	●	●	●	●	●	●	●
124				●	●	●	●	●	●	●	●		
129					●	●	●	●	●	●	●		
134						●	●	●	●	●	●		
139							●	●	●	●	●	●	●
144							●	●	●	●	●		
149							●	●	●	●	●		
154										●	●		
159											●	●	●
164													
169													
174													
179												●	●
184													
189													
194													
199												●	●

Extrusion Series



Stripper guide bushings



Material	Hardness
SUJ2	HRC60° ± 2°

d		D1	D2		d	
16		16	20		10	+0.014 +0.005
18		18	22		12	+0.017 +0.006
25		25	30		16	
30		30	35		20	
35	-0.03 -0.05	35	40	BT533	25	+0.020 +0.007
40		40	45		30	
50		50	55		40	+0.025 +0.009
60		60	66		50	

BRAHMADEVI ENGINEERING PRODUCTS

Regd. Office :19, Martand Chowk, INDORE - 452 007 (M.P.) INDIA
Ph. : +91 - 731 - 2720243, Fax : +91 - 731 - 2721554
E-mail : ishan1809@yahoo.com, ruchir@diespares.com Website : diespares.com

Stripper guide bushings

L \ d d1	d	10	12	16	20	25	30	35	40	45	50	60	70	80
	d1	14	18	25	30	35	40	45	55	60	70	80	90	100
14			●	●	●	●	●	●						
19			●	●	●	●	●	●	●	●	●			
24			●	●	●	●	●	●	●	●	●			
29			●	●	●	●	●	●	●	●	●	●		
34			●	●	●	●	●	●	●	●	●	●		
39			●	●	●	●	●	●	●	●	●	●		
44			●	●	●	●	●	●	●	●	●	●	●	
49			●	●	●	●	●	●	●	●	●	●		
54				●	●	●	●	●	●	●	●	●		
59				●	●	●	●	●	●	●	●	●	●	●
64				●	●	●	●	●	●	●	●	●		
69				●	●	●	●	●	●	●	●	●		
74				●	●	●	●	●	●	●	●	●		
79				●	●	●	●	●	●	●	●	●	●	●
84				●	●	●	●	●	●	●	●	●		
89				●	●	●	●	●	●	●	●	●		
94				●	●	●	●	●	●	●	●	●		
99				●	●	●	●	●	●	●	●	●	●	●
104				●	●	●	●	●	●	●	●	●		
109				●	●	●	●	●	●	●	●	●		
114				●	●	●	●	●	●	●	●	●		
119					●	●	●	●	●	●	●	●	●	●
124					●	●	●	●	●	●	●	●		
129						●	●	●	●	●	●	●		
134							●	●	●	●	●	●		
139							●	●	●	●	●	●	●	●
144								●	●	●	●	●		
149								●	●	●	●	●		
154											●	●		
159												●	●	●
164														
169														
174														
179													●	●
184														
189														
194														
199													●	●