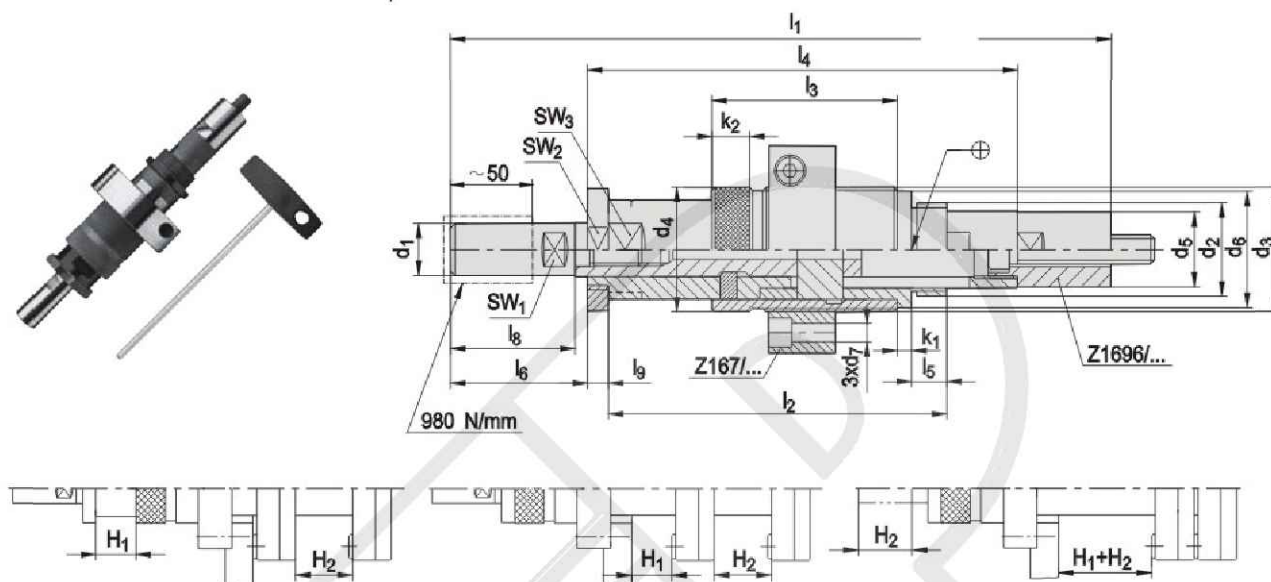


Ejector Series

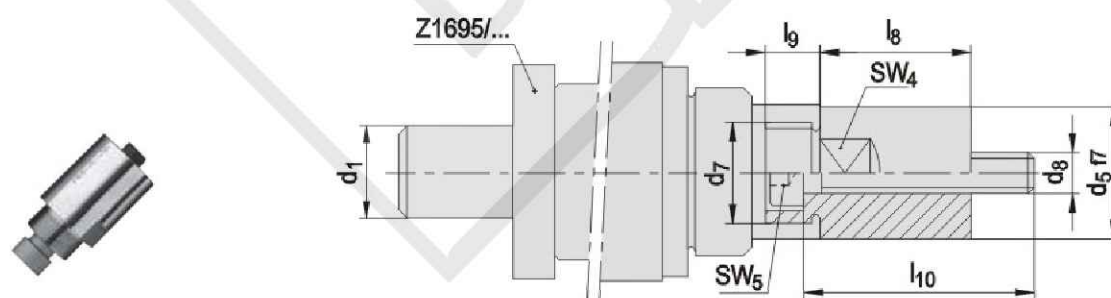
Z1695 Two stage ejectors

It is convenient for installing processing machinery interlocking design so that it is safe and reliable. The installation stroke needs to be calculated accurately. Otherwise, the product is likely to be damaged. Select appropriate specification according to load requirement of the die.



Type	k ₂	k ₁	Sw ₃	Sw ₂	Sw ₁	k ₂	k ₂	k ₂	k ₂	k ₂	k ₂	l ₂	l ₁	H ₂		H ₁		d ₇	d ₆	d ₅	d ₄	d ₃	d ₂	d ₁
														min.	max.	min.	max.							
Z 1695/22	18	6	36	46	17	10	52	58	17	175	82	141	278	6	48	4	36	9	50	31,5	52	M52 × 1,5	M40 × 1,5	22
25		7	41	55	19		60	66		207	89	163	329	8	60	5	50		56	36	60	M60 × 1,5	M45 × 1,5	25
32	16	8	50	65	27	12	82	102	22	257	106	196	430	10	86	6	60	11	70	44	72	M72 × 1,5	M55 × 1,5	32

Z1696 Two stage ejectors



Type	Sw ₅	Sw ₄	l ₁₀	l ₉	l ₈	d ₈	d ₇	d ₅	d ₁
Z 1696/22	6	27	62	13	45	M12 × 1,25	M24 × 1,25LH	31,5	22
25	8	32	78	14	56	M14 × 1,5	M28 × 1,25LH	36	25
32		36	100	16	71	M16 × 1,5	M34 × 1,25LH	44	32