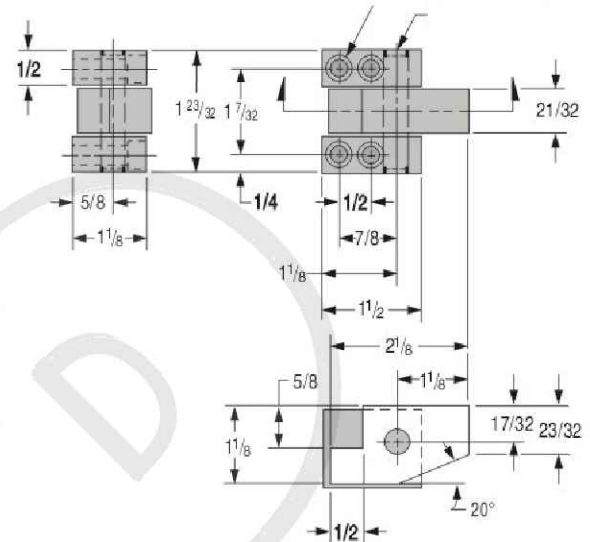


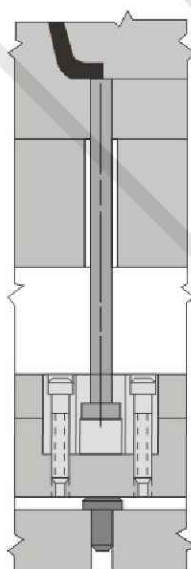
AED Accelerated ejector



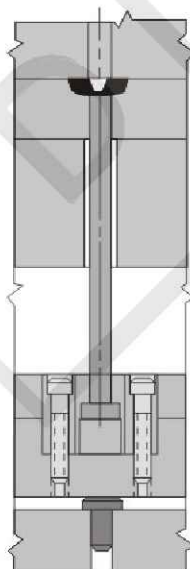
The DME Accelerated Knock-Outs are simple in design, using a pivot-type motion for accelerated ejection. Mechanical advantage is 1:1. They will accommodate ejector pins up to 3/8" in diameter. (Pin with head diameters greater than 5/8" can be ground down to fit.) Simplicity of design permits DME Accelerated Knock-Outs either to be inserted into the ejector plate (as shown below) or top-mounted, depending on space available for the ejection movement.



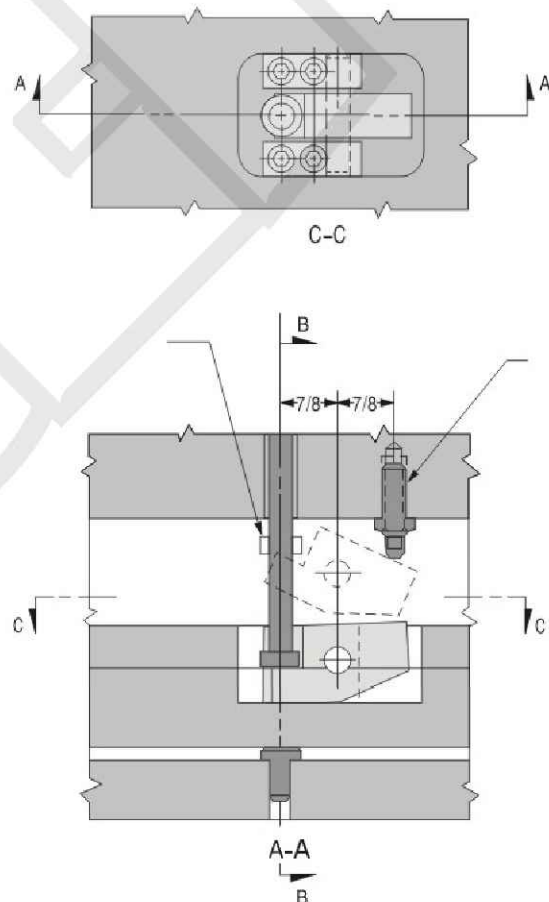
Typical applications



B-B



B-B



A-A