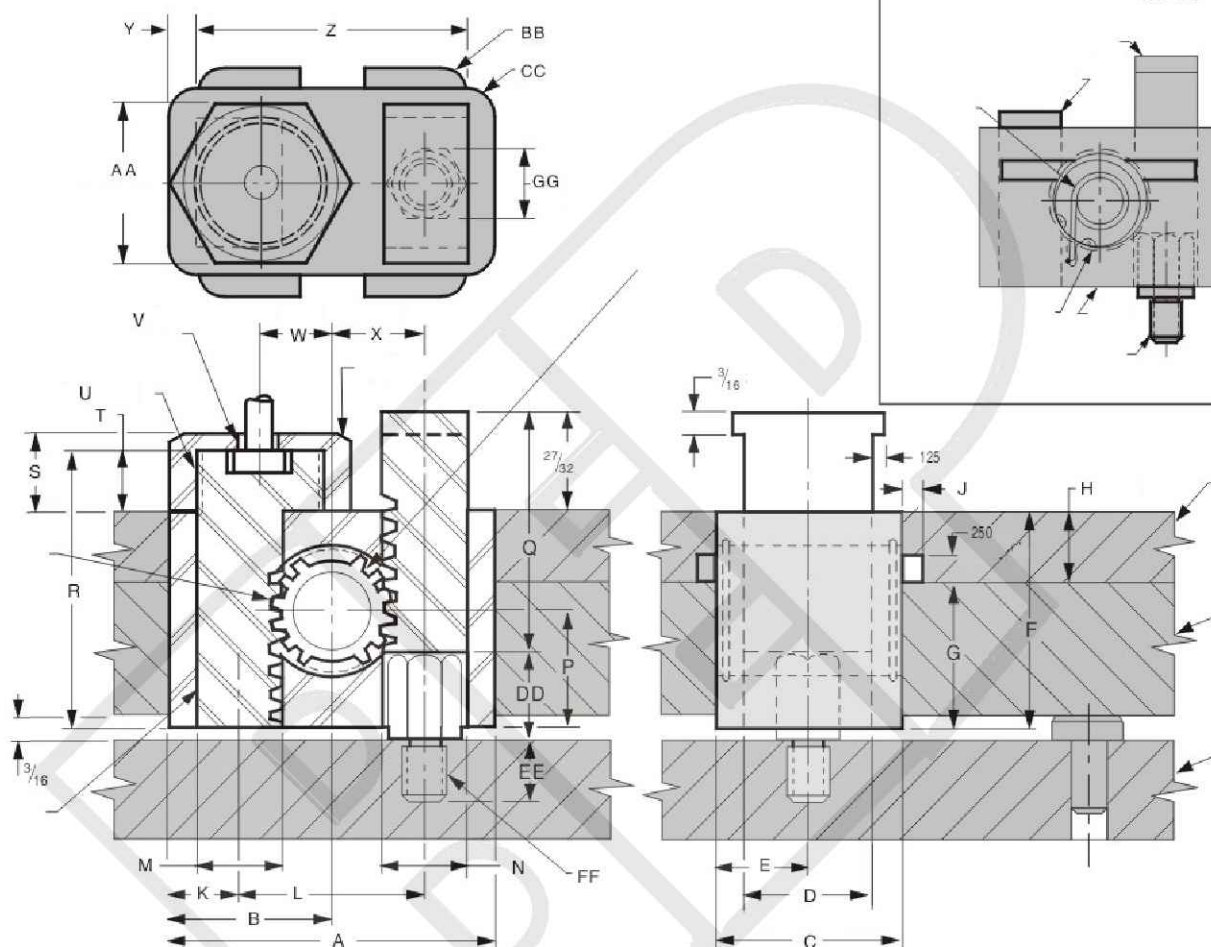
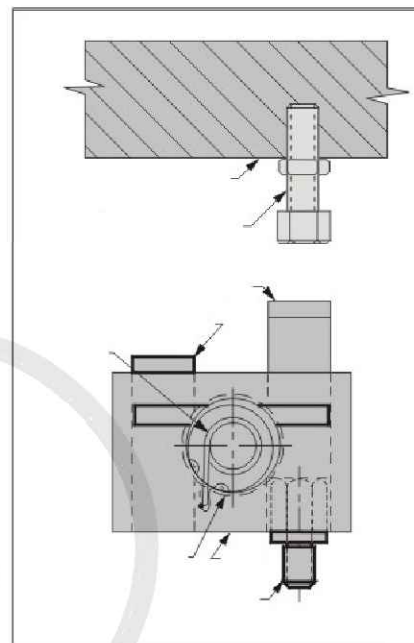


Ejector Series

AEP Accelerated ejector

- Stroke for all units=5/8 maximum
- Keep pinion lubricated
- Do not use with opposing spring pressure



Accelerated ejector dimensions

	A	B	C	D	E	F	G	H	J	K	L	M	N	P	Q		
AEP-10	+0.000 -0.002	+0.000 -0.002	+0.000 -0.002	5/8	9/16	1.600	1.100	1/2	± 0.002 .125	.510	1.1030	1/2	1/2	1.030	1.783		
AEP-10	2.125	1.062	1.125														
AEP-20	+0.000 -0.004	+0.000 -0.002	+0.000 -0.002	1 1/8	13/16	1 7/8	1 1/4	5/8	± 0.002 .187	5/8	1 5/8	3/4	3/4	1.016	1 1/16		
AEP-20	2.875	1.437	1.625														
	R	S	T	U	V	W	X	Y	Z	AA	BB	CC	DD	EE	FF	GG	Unit price
AEP-10	2.025	.550	.425	5/8-18	1/8	.491				15/16							
AEP-10	-	-	-	-	-	-	.551	.250	1.625	-	1/4	1/4	3/4	3/8	5/16-18	3/8	1100.00
AEP-20	2 3/8	.680	1/2	1 1/8-12	1/4	5/8				1 3/8							
AEP-20	-	-	-	-	-	-	13/16	.250	2.375	-	3/16	1/4	.72	1/2	3/8-16	9/16	1300.00

BRAHMADEVI ENGINEERING PRODUCTS

Regd. Office :19, Martand Chowk, INDORE - 452 007 (M.P.) INDIA
Ph. : +91 - 731 - 2720243, Fax : +91 - 731 - 2721554
E-mail : ishan1809@yahoo.com, ruchir@diespares.com Website : diespares.com