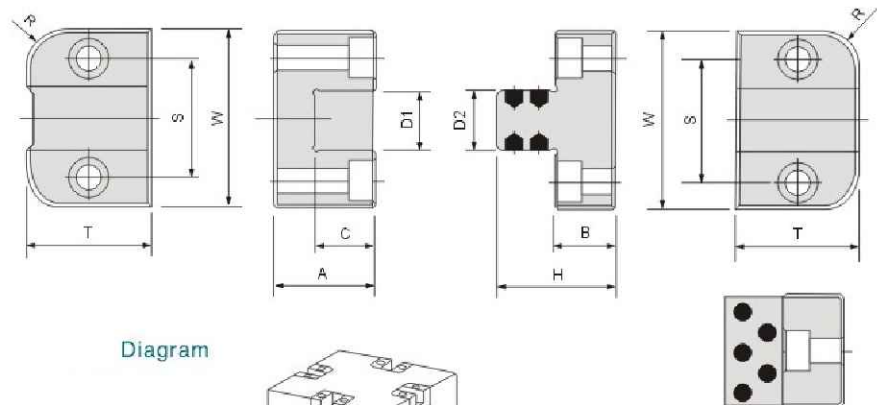


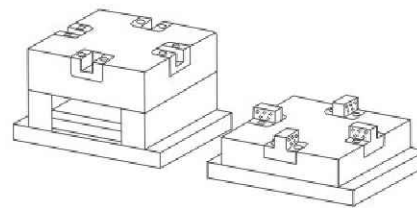
Positioning Components

TM Locating Block sets



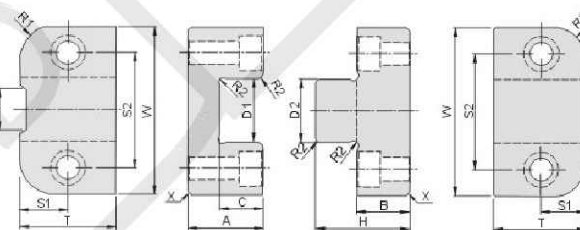
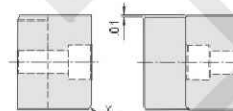
Diagram

Mat : YK30 HRC 58 ~ 60
Mat : SKD11 HRC 55 ~ 60



Type No.	W 0 -0.01	T 0 -0.1	A 0 -0.05	B 0 -0.05	C ± 0.1	D1 +0.010 +0.005	D2 0 -0.005	H 0 -0.1	R	S	SHCS
TM35	35	26	25	15	14.5	11	11	29	8	23	M5
TM45	45	30	25	15	14.5	15	15	29		30	M6
TM55	55	36	30	20	19.5	20	20	39		37.5	M8
TM75	75	36	35	20	24.5	30	30	44		52	M10
TM100	100	45	60	20	39.5	40	40	59		70	M10
TM125	125	50	60	25	54.5	60	60	79		92.5	M14

TL Locating Block sets



Mat : SKD11 HRC 58 ~ 62
Mat : YK30 HRC 50 ~ 54

Type No.	W 0 -0.0004	T	A	B	C	OVERALL HEIGHT	D1 +0.0004 +0.0002	D2 0 -0.0002	H	J	R1	R2	S1	S2	SHCS
TL125	1.250	0.625	0.625	0.500	0.414	1.125	0.438	0.438	0.875	3/8X1/16	0.26	0.059	0.312	0.875	MALE:#6-32X5/8" FEMALE:#6-32X3/4"
TL150	1.500	0.875	0.875	0.750	0.531	1.625	0.500	0.500	1.25	3/8X1/16	0.26	0.059	0.437	1.000	MALE:#8-32X7/8" FEMALE:#8-32X1"
TL200	2.000	1.000	1.125	0.750	0.664	1.875	0.750	0.750	1.375	1/2X1/16	0.38	0.059	0.500	1.375	MALE:#10-32X1" FEMALE:#6-32X3/4"
TL300	3.000	1.125	1.500	0.750	0.787	2.250	1.125	1.125	1.500	3/4X3/32	0.51	0.098	0.562	2.250	MALE:1/4-20X7/8" FEMALE:1/4-20X1-5/4"

BRAHMADEVI ENGINEERING PRODUCTS

Regd. Office :19, Martand Chowk, INDORE - 452 007 (M.P.) INDIA
Ph. : +91 - 731 - 2720243, Fax : +91 - 731 - 2721554
E-mail : ishan1809@yahoo.com, ruchir@diespares.com Website : diespares.com