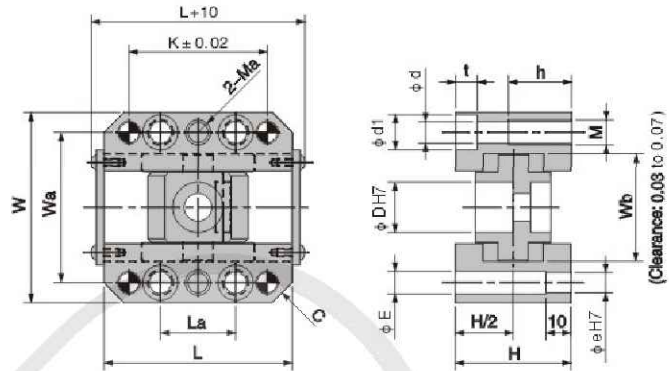


# Ejector Series

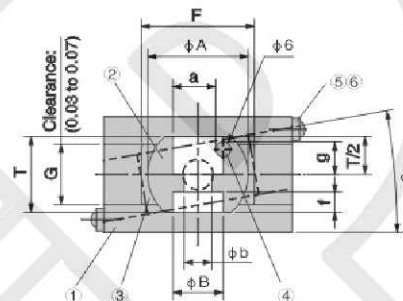


## KOCUF Slider Core units



● Table of Components

No.	Description	Qty	Material and Remark
①	Guide Rail	2	S45C (C45 A 1045)
②	Inclined Pin Holder	1	S45C (C45 A 1045)
③	Slide Plate	2	Bronze with Graphite
④	Loosening Lock	1	SK5M
⑤	Lock Plate	2	SS400 (A A36 – 89b, 283 – 88)
⑥	Round Head Screw	4	SCM435 (J 34CrMo4 A 4137)



\*Remove the Lock Plate as required for operation.

D	W	Wa	L	La	K	Ma	C	H	e	E	d	d1	t	h	M	Wb
8	41	33	44	12	25	M4	3	24	4	5	3.4	6	3.4	10	M4	24
10	47	38	50	16	30	M5	3	28	5	5.5	4.5	8	5	15	M5	28
12	53	42	60	20	40	M8	4	36	6	7	6.6	11	4.8	20	M8	31
16	64	50	70	25	50	M8	6	40	6	6.6	6.6	11	6.5	20	M8	36
20	76	60	75	30	55	M10	8	46	8	9	8.6	14	8.5	25	M10	43
25	81	65	85	40	65	M10	8	48	8	9	8.6	14	8.5	25	M10	48
30	88	72	100	50	80	M10	8	54	8	9	8.6	14	8.5	25	M10	55
35	100	80	115	50	85	M12	8	60	10	11	11	18	6.5	30	M12	64
40	108	88	125	50	85	M12	8	65	10	11	11	18	7	30	M12	72

D	A	a	B	b	g	F	f	G	T		
8	20	7.5	10	5	6.5	25	5	13	16	500.00	1~5°
10	20	8.5	12	6	6.5	32	4	17	16	530.00	
12	25	10	13	7	8.5	40	5	20	20	550.00	
16	30	13	16	9	10	45	6	24	24	630.00	1~5°
20	40	17	20	11	13	45	8	24	30	700.00	
25	45	22	25	14	14	50	9.5	26	35	860.00	
30	50	27	25	14	15	60	9	30	38	960.00	1~5°
35	55	31	25	14	15	70	10	34	40	1230.00	
40	60	36	32	18	16	80	11.5	38	43	1400.00	1~5°

### BRAHMADEVI ENGINEERING PRODUCTS

Regd. Office :19, Martand Chowk, INDORE - 452 007 (M.P.) INDIA  
Ph. : +91 - 731 - 2720243, Fax : +91 - 731 - 2721554  
E-mail : ishan1809@yahoo.com, ruchir@diespares.com Website : [diespares.com](http://diespares.com)