

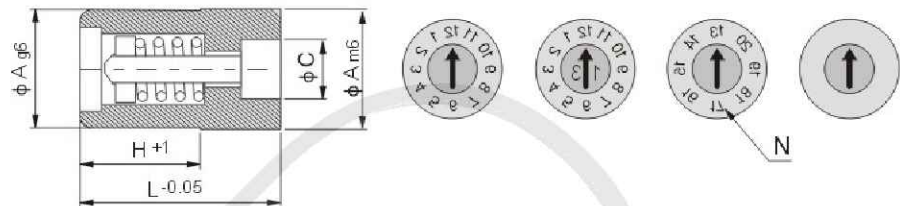
Replaceable Date Stamp FA



Material : SUS420
Hardness : 48°-54° HRc

European Spanish standard

- 1、 Rotate the inserted parts clockwise, and no concavo convex phenomenon appears;
- 2、 The inserted parts can be changed from the front face, and when rotating it 2-4 circles anticlockwise, convex phenomenon appears, and it is easy to replace without removing the mould;
- 3、 Note: In the production process, don't rotate anticlockwise when adjusting the date stamp, and you should adjust it clockwise to avoid the inserted parts loose.



※ N stands for displayed number of years.

(1-12)	(10+12)	(10)	Blank	ϕA	C	D	L	N
FA.0422SF	FA.042212	FA.042204	FA.042200	4	2.2	6	12	4
FA.0530SF	FA.053012	FA.053004	FA.053000	5	3	6	12	4
FA.0632SF	FA.063212	FA.063205	FA.063200	6	3.2	12	20	5
FA.0847SF	FA.084712	FA.084705	FA.084700	8	4.7	12	20	5
FA.1057SF	FA.105712	FA.105706	FA.105700	10	5.7	12	20	6
FA.1267SF	FA.126712	FA.126708	FA.126700	12	6.7	12	20	8
FA.1687SF	FA.168712	FA.168710	FA.168700	16	8.7	12	20	10
FA.2007SF	FA.200712	FA.200710	FA.200700	20	10.7	12	20	10

Fill in the start year after the model for order.

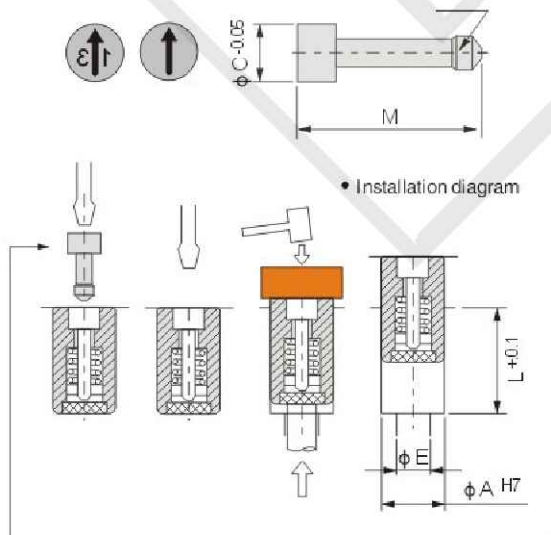


Order:

Type No. x Pcs
FA.0422SF x 10

Inner Pointer of Date Stamp IA

Inner pointer can be dismantled, and you can choose different types of inner pointer according to different years.



Arrow	Year	C	M
IA.2275SF	IA.2275..	2.2	7.5
IA.3075SF	IA.3075..	3	7.5
IA.3217SF	IA.3217..	3.2	17
IA.4717SF	IA.4717..	4.7	17
IA.5717SF	IA.5717..	5.7	17
IA.6717SF	IA.6717..	6.7	17
IA.8717SF	IA.8717..	8.7	17
IA.1007SF	IA.1007..	10.7	17

When date stamp insert is put into the main body, pay attention to listening to the sound of "click" which indicates insert installation is successful.

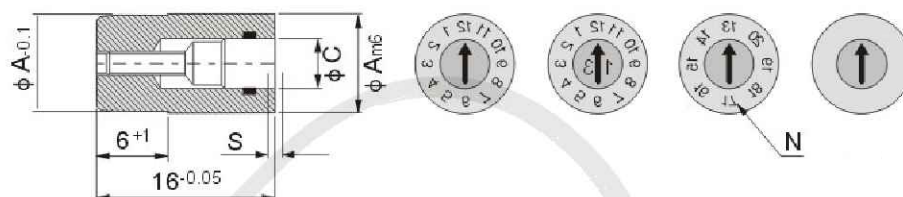
Date Stamp Series

Replaceable Date Stamp FX



Material : SUS420
Hardness : 48°-54° HRc

- European Spanish standard**
- 1、 Rotate the inserted parts clockwise, and no concavo convex phenomenon appears;
 - 2、 The inserted parts can be changed from the front face, and when rotating it 2-4 circles anticlockwise, convex phenomenon appears, and it is easy to replace without removing the mould;
 - 3、 Note: In the production process, don't rotate anticlockwise when adjusting the date stamp, and you should adjust it clockwise to avoid the inserted parts loose.



※ N stands for displayed number of years.

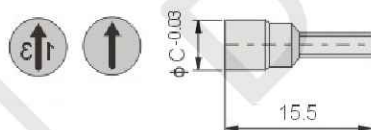
(1-12)	(10+12)	(10)	Blank	φ A	C	E	S
FX.0632SF	FX.063212	FX.063205	FX.063200	4	3.2	4	0.25
FX.0847SF	FX.084712	FX.084705	FX.084700	8	4.7	6	0.25
FX.1057SF	FX.105712	FX.105706	FX.105700	10	5.7	8	0.35
FX.1267SF	FX.126712	FX.126708	FX.126700	12	6.7	10	0.35

Fill in the start year after the model for order.

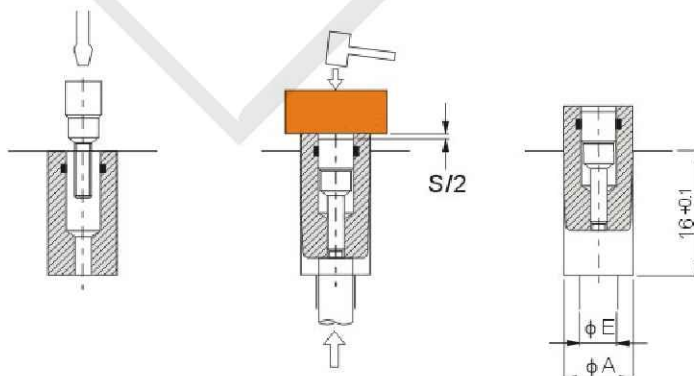
Order: Type No. x Pcs
FX.0632SF x 10

Inner Pointer of Date Stamp IX

Inner pointer can be dismantled, and you can choose different types of inner pointer according to different years.



• Installation diagram



Arrow	Year	C
IX.3215SF	IX.3215..	3.2
IX.4715SF	IX.4715..	4.7
IX.5715SF	IX.5715..	5.7
IX.6715SF	IX.6715..	6.7

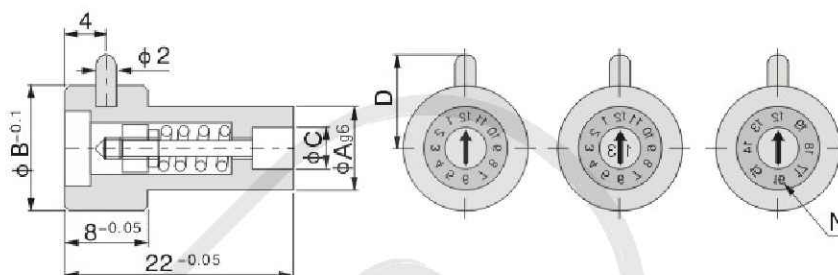
Please indicate the year in the date.

Replaceable Date Stamp European Spanish standard
FT



Material : SUS420
Hardness : 48°-54° HRc

- 1、The inserted parts can be replaced from the front, and it has main design of hanging appearance;
- 2、It can prohibit the date stamp breaking loose from the front mucous membrane in the injection molding;
- 3、Note: In the production process, don't rotate the date stamp anticlockwise, and you should rotate it clockwise.



※ N stands for displayed number of years.

Month	Month Year	Year	ϕ A	ϕ C	ϕ B	D	N
FT.0847SF	FT.084712	FT.084705	8	4.7	12	11	5
FT.1057SF	FT.105712	FT.105706	10	5.7	14	11	8
FT.1267SF	FT.126712	FT.126708	12	6.7	16	12	8
FT.1607SF	FT.160712	FT.160708	16	10.7	20	14	8

Fill in the start year after the model for order.

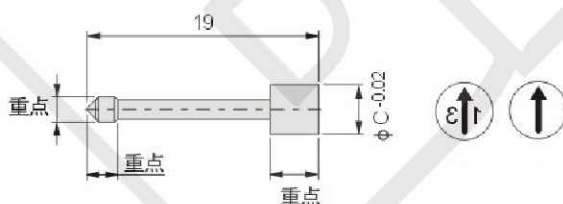


Order

Type No.	x	Pcs
FT.0847SF	x	10

Inner Pointer of Date Stamp

Inner pointer can be dismantled, and you can choose different types of inner pointer according to different years.



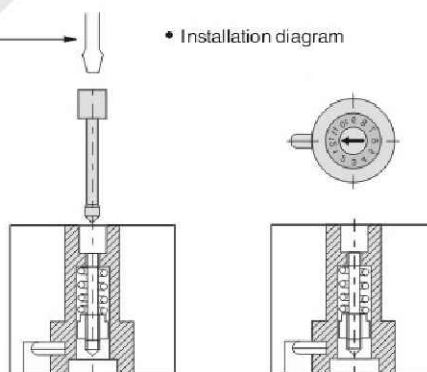
Arrow	Year	C
IT.4719SF	IT.4719..	4.7
IT.5719SF	IT.5719..	5.7
IT.6719SF	IT.6719..	6.7
IT.0719SF	IT.0719..	10.7

➤ Please indicate the year in the date.



- Installation diagram

When date stamp insert is put into the main body, pay attention to listening to the sound of "click" which indicates insert installation is successful.

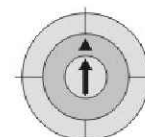
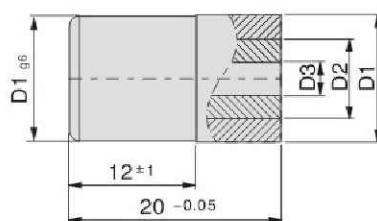


Date Stamp Series

Three-lay Combined Date Stamp FD

European Spanish standard

This kind of stamp, combined with Year and Month, doesn't need two date stamps, and therefore it can save machining cost and mould space. It is composed of 12 months and 5 years, and so you can use it for four years without change. It is much stable in quality than the replacement type, thus saving costs. (Begin from the year of 2013).



* N stands for displayed number of years.

		D1	D2	D3
FD.080512/..	FD.080500	8	5	2.5
FD.100612/..	FD.100600	10	6	3
FD.120812/..	FD.120800	12	8	4
FD.161012/..	FD.161000	16	10	5
FD.201212/..	FD.201200	20	12	6

Fill in the start year after the model for order.



Order:

Type No.

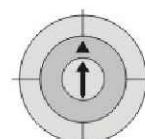
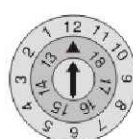
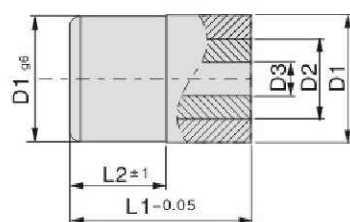
x

Pcs

FD.080512 x 10

Three-lay Combined Date Stamp FDA

This kind of stamp, combined with Year and Month, doesn't need two date stamps, and therefore it can save machining cost and mould space. It is composed of 12 months and 5 years, and so you can use it for four years without change. Length has been changed compared with FD, suitable for regional application (Begin from the year of 2013).



AB	Type	Size			
	(1-12) (begin from 13)+Month (1-12)	D1	D2	D3	
FDA. 1210 6/..		φ 6	4	2	12
FDA. 12108/..		φ 8	5	2.5	12
FDA. 121010/..		φ 10	6	3	12
FDA. 121012/..		φ 12	8	4	14
FDA. 121016/..		φ 16	10	5	14
FDA. 121020/..		φ 20	12	6	16



Order:

Type No.

x

Pcs

FDA.1210 6 x 10

BRAHMADEVI ENGINEERING PRODUCTS

Regd. Office :19, Martand Chowk, INDORE - 452 007 (M.P.) INDIA

Ph. : +91 - 731 - 2720243, Fax : +91 - 731 - 2721554

E-mail : ishan1809@yahoo.com, ruchir@diespares.com Website : www.diespares.com