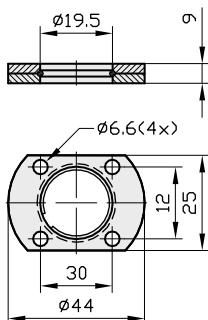
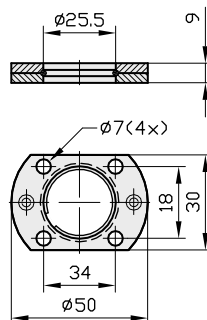


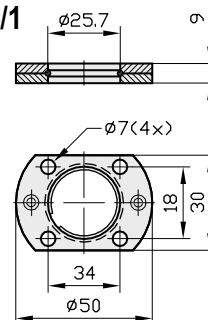
FS 19



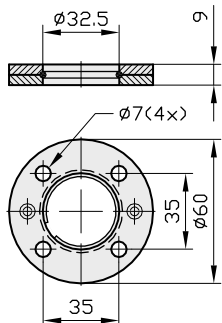
FS 25



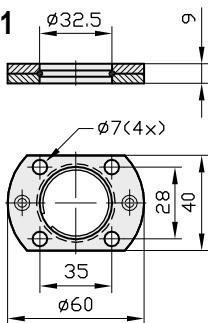
FS 25/1



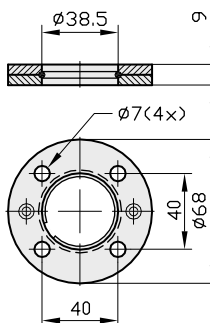
FS 32



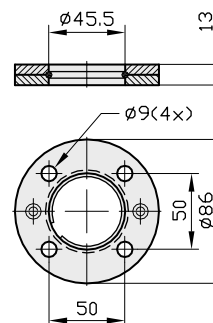
FS 32/1



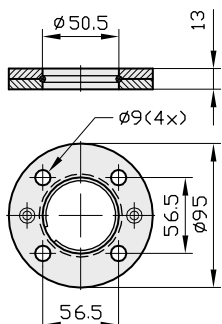
FS 38



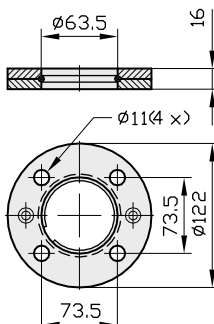
FS 45



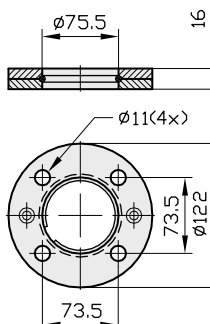
FS 50



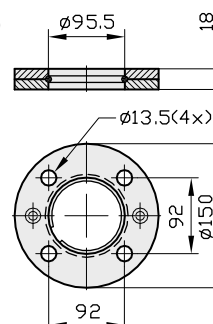
FS 63



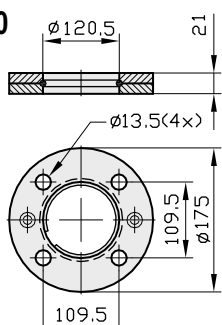
FS 75



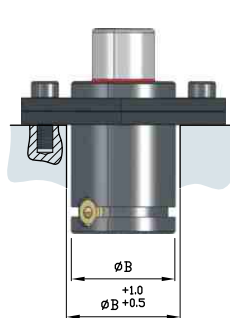
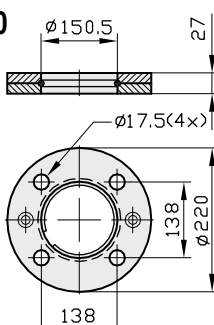
FS 95



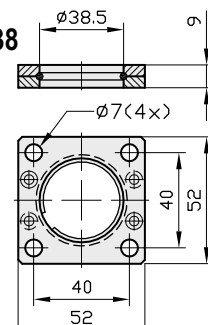
FS 120



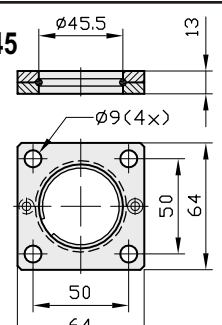
FS 150



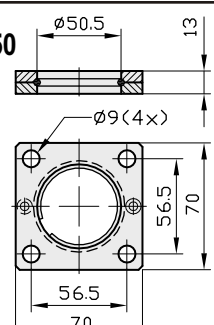
FSC 38



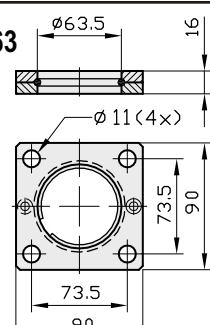
FSC 45



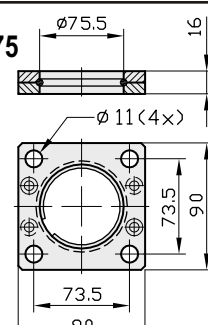
FSC 50

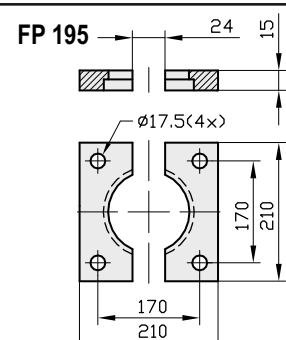
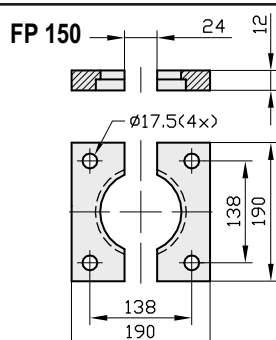
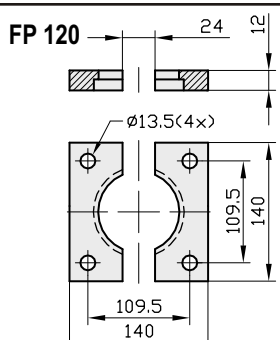
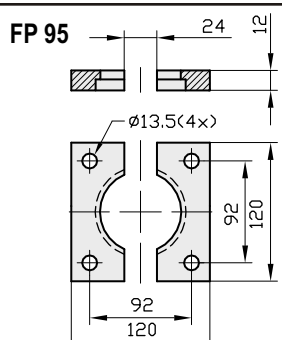
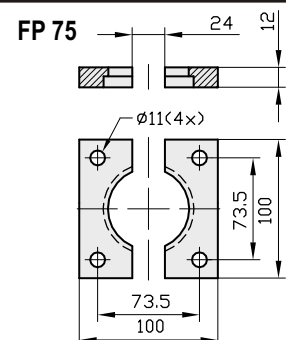
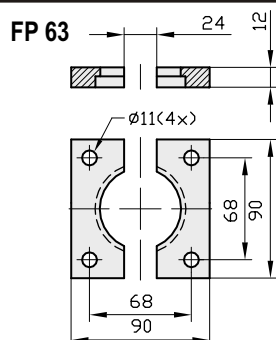
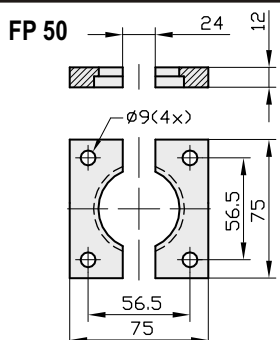
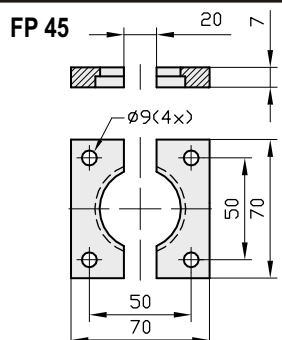
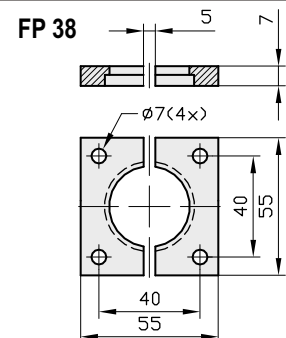
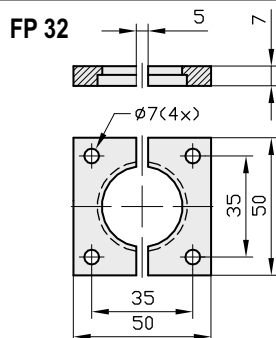
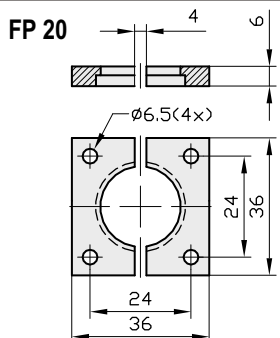
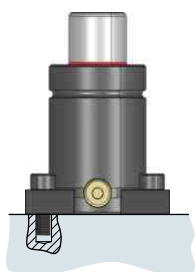
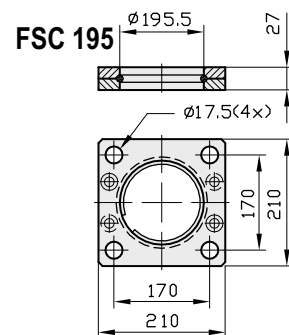
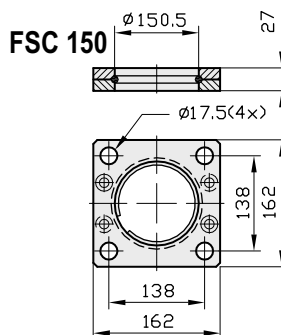
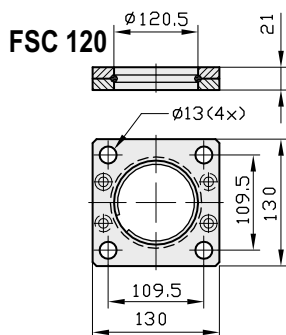
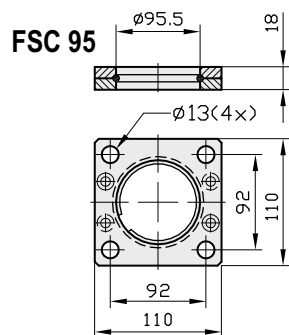


FSC 63

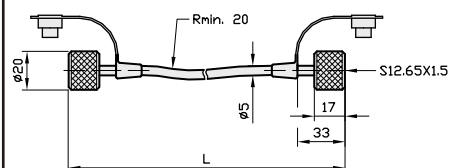


FSC 75

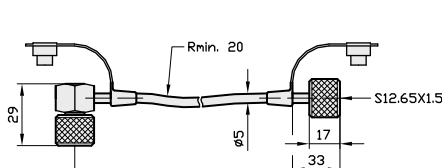




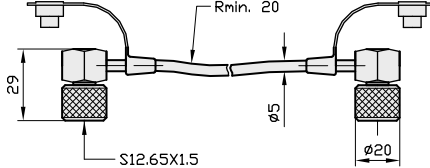
FLEXIBLE HOSE MF1215-RR

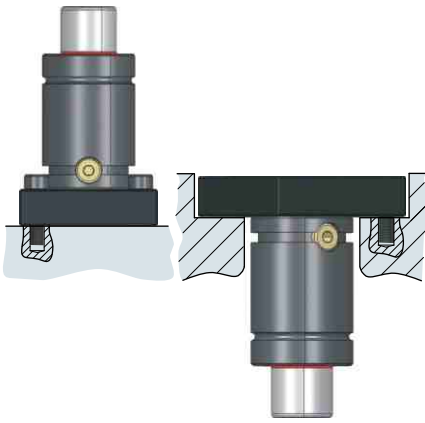


FLEXIBLE HOSE MF1215-RC

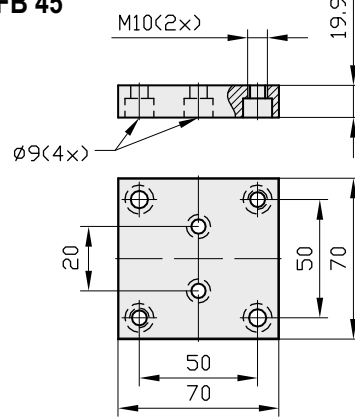


FLEXIBLE HOSE MF1215-CC

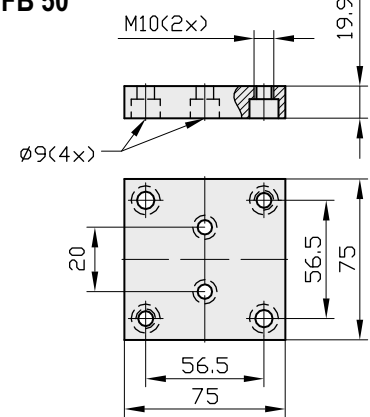




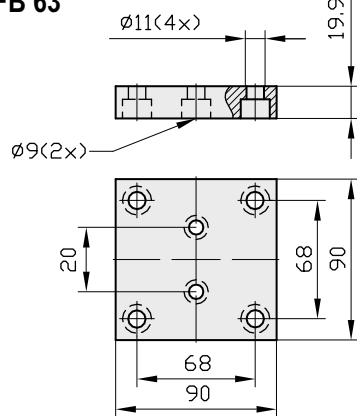
FB 45



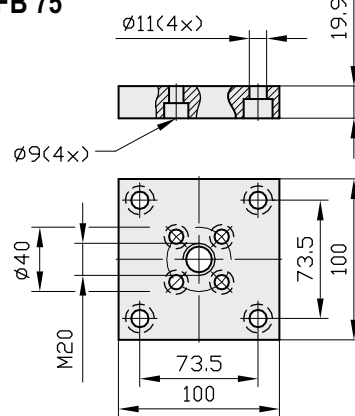
FB 50



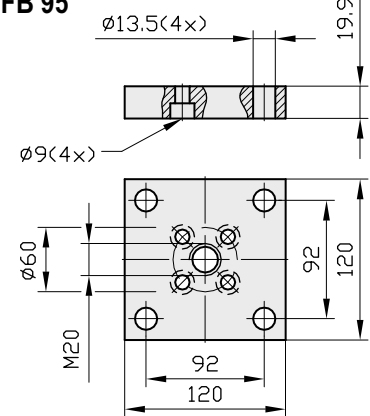
FB 63



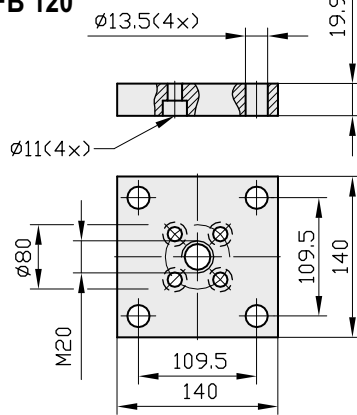
FB 75



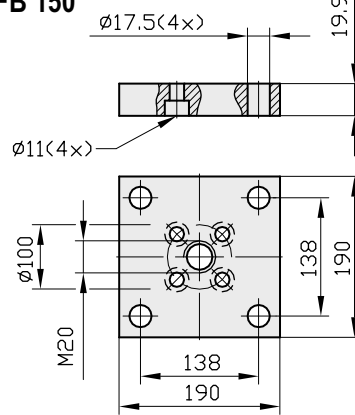
FB 95



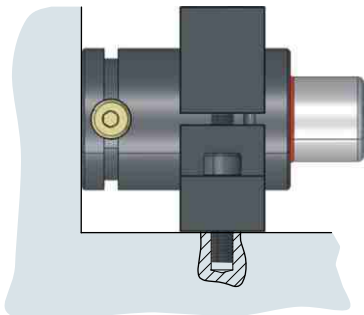
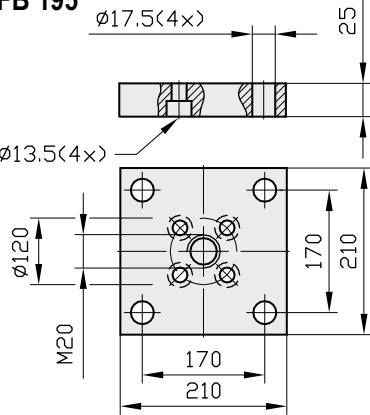
FB 120



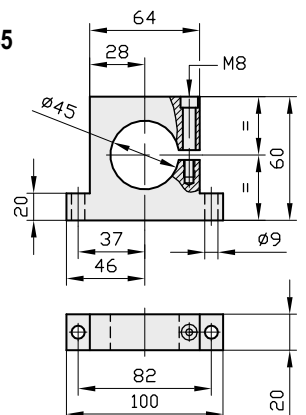
FB 150



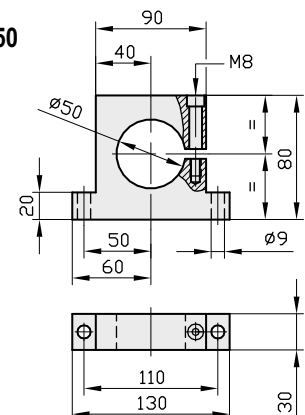
FB 195

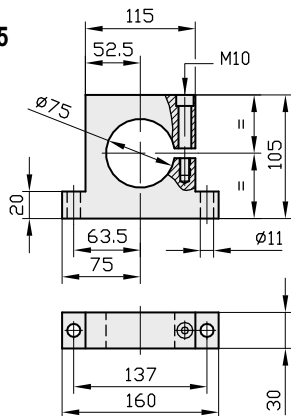
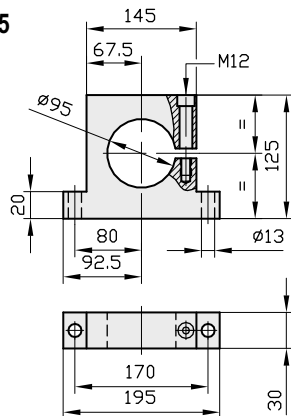
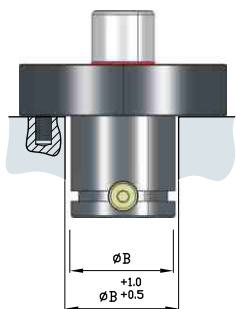
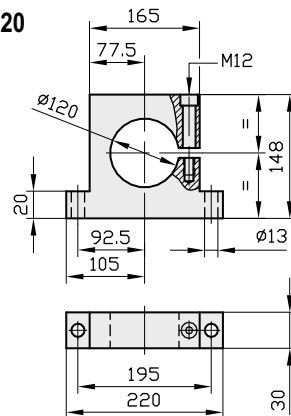
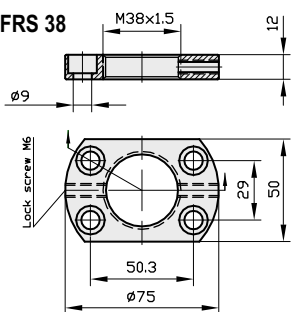
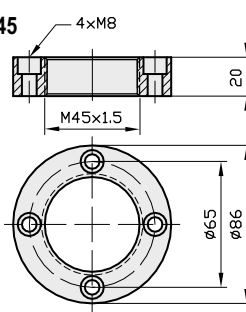
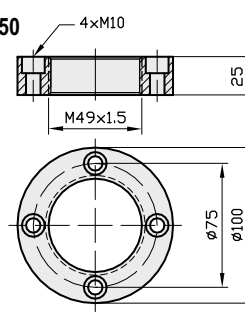
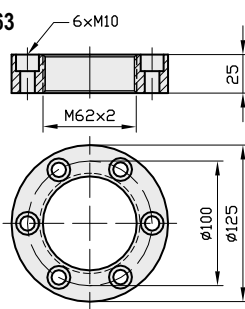
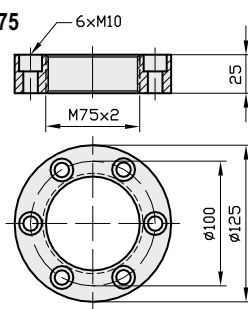
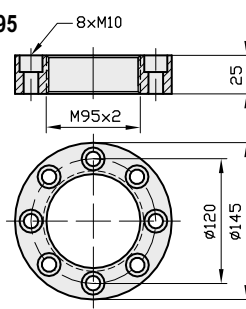
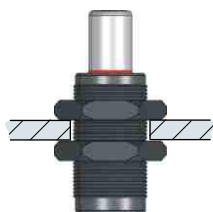
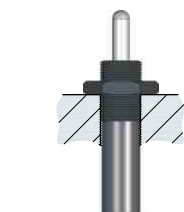
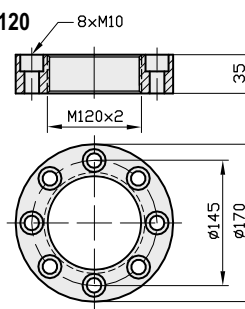
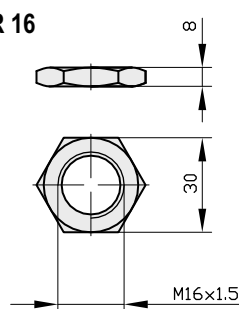
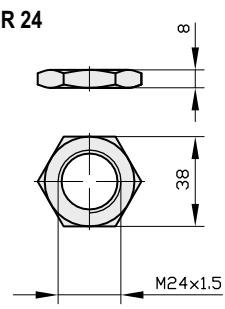
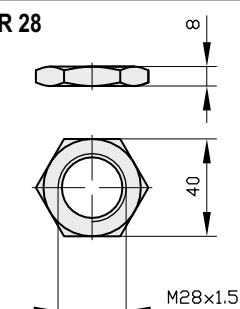
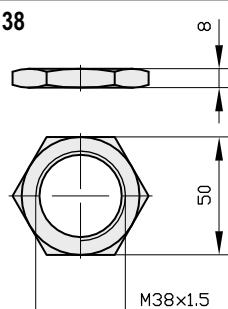
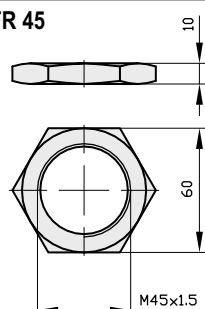
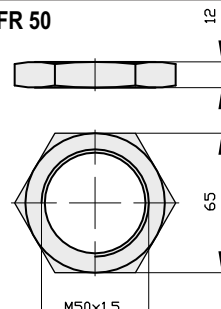


FI 45

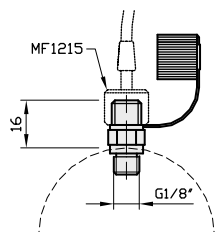


FI 50

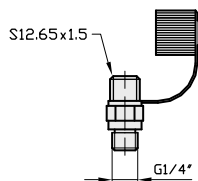


FI 75

FI 95

FI 120

FRS 38

FRS 45

FRS 50

FRS 63

FRS 75

FRS 95

FRS 120

FR 16

FR 24

FR 28

FR 38

FR 45

FR 50


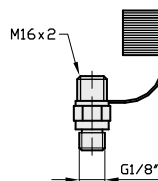
RACORD RMF-D1



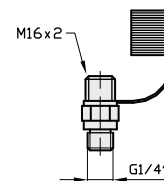
RACORD RMF-D2



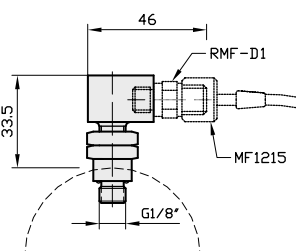
RACORD RMF-D3



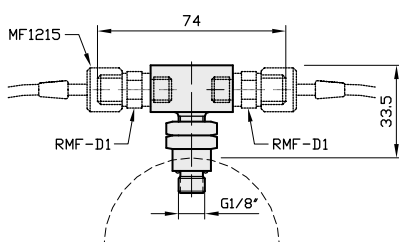
RACORD RMF-D4



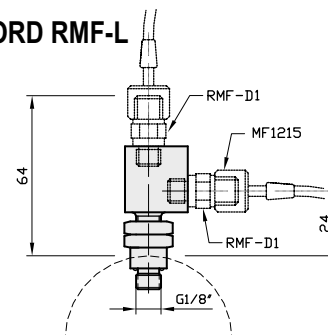
RACORD RMF-C



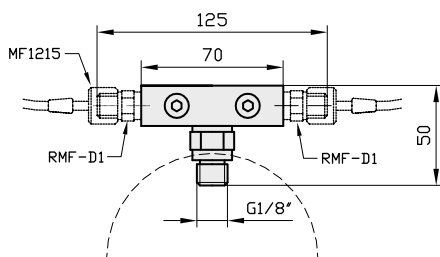
RACORD RMF-T



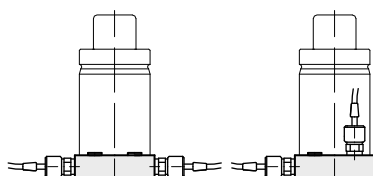
RACORD RMF-L



RACORD RMF-M

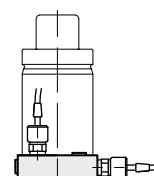


How to order

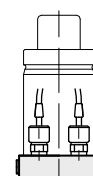


RMF-M1

RMF-M2

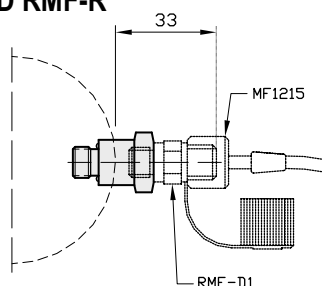


RMF-M3



RMF-M4

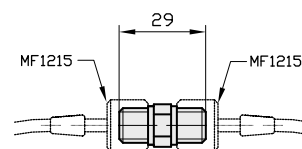
RACORD RMF-R



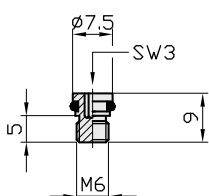
Models:

TPKS 1000, TPKF 750, TPK 2500, TPK 3000,
TPKF 1500, MICRO 50C, MICRO 75, TPB 1250

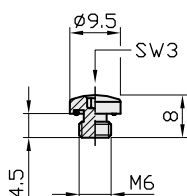
RACORD RMF-FH



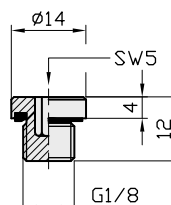
TAPON M6-1 SECURITY SCREW M6-1



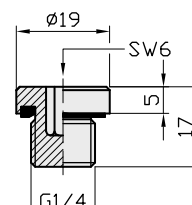
TAPON M6-2 SECURITY SCREW M6-2



TAPON G1/8 SECURITY SCREW G1/8



TAPON G1/4 SECURITY SCREW G1/4



FILLING VALVE TPFV1



FILLING VALVE TPFV2



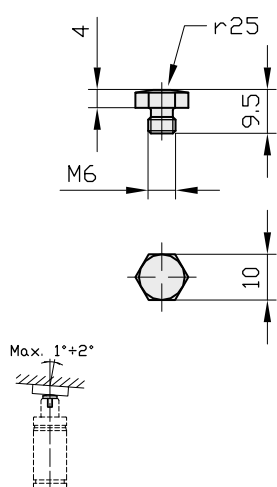
FILLING VALVE TPFV3



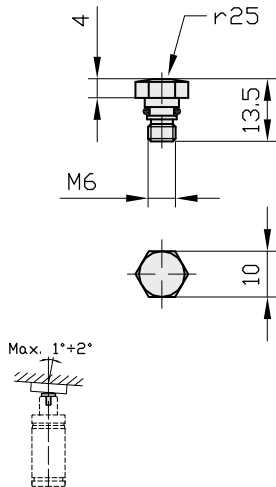
FILLING VALVE TPFV4



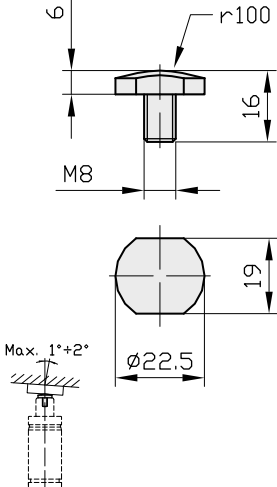
THRUST PLATE TPSC-M6



THRUST PLATE TPSC-M6OR



THRUST PLATE TPSC-M8L



THRUST PLATE TPSC-M8C

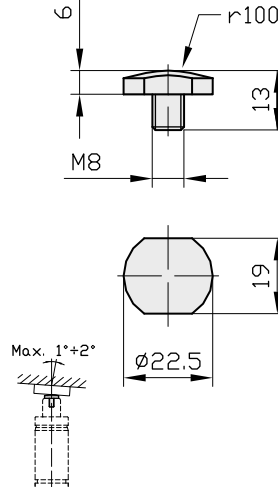
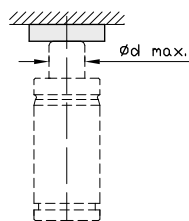
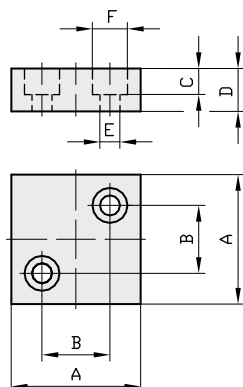
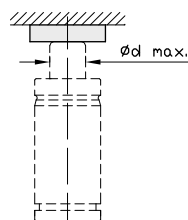
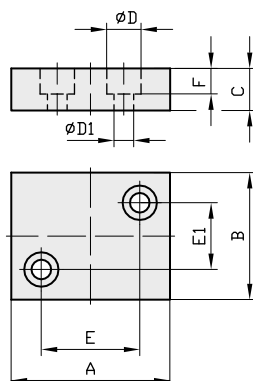


PLATE TPSP



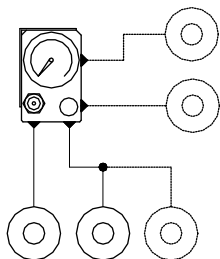
Model	Ø d max	A mm	B mm	C mm	D mm	E mm	F mm
TPSP 22	22	40	21	10	15	9	15
TPSP 36	36	56	32	13	20	11	18
TPSP 65	65	71	48	13	20	11	18
TPSP 95	95	84	60	13	25	11	18

PLATE TPSR

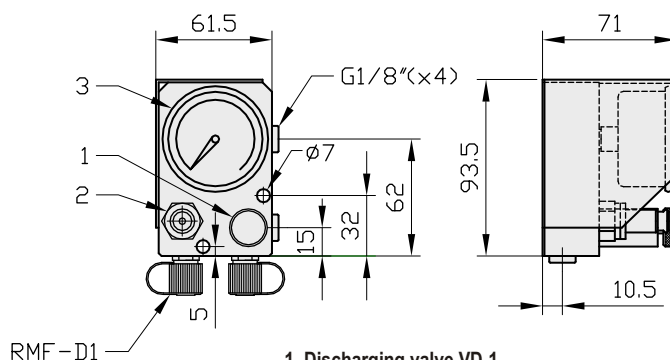


Model	Ø d max	A mm	B mm	C mm	Ø D1 mm	Ø D mm	E mm	E1 mm	F mm
TPSPR-1	15	50	25	12	7	11	32	8	7
TPSPR-2	20	55	50	12	7	11	40	14	7
TPSPR-3	25	70	35	15	9	15	48	14	9
TPSPR-4	36	75	50	15	9	15	56	30	9
TPSPR-5	50	85	60	15	9	15	66	40	9
TPSPR-6	65	100	80	20	11	18	72	56	11
TPSPR-7	80	110	100	20	11	18	85	75	11

MINI CONTROL PANEL P110



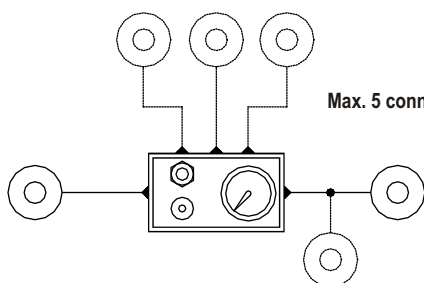
Max. 4 connectors



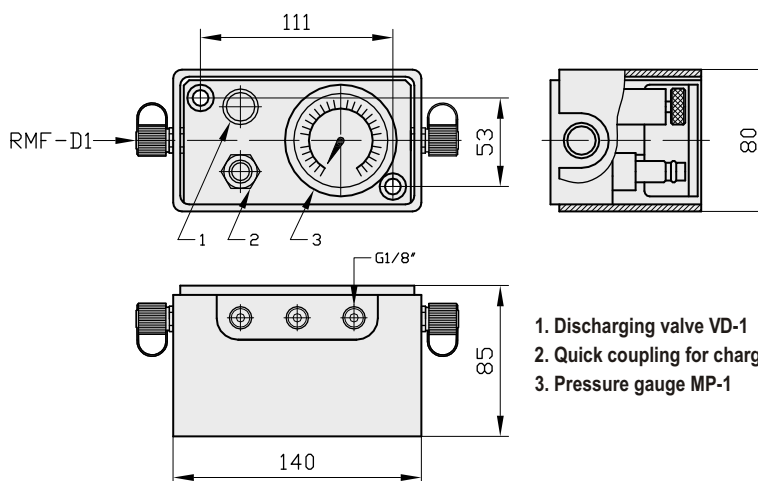
1. Discharging valve VD-1
2. Quick coupling for charging ERM
3. Pressure gauge MP-1

Mini-control panel: this small-sized device is used for the permanent control of gas-spring pressure. It is equipped with a quick-fit socket for gas charging and a discharging valve for decompression. P110 control panels have up to 4 G1/8" outlets for a gas spring interconnection. Pressure gauge range is from 0 to 400 Bar.

CONTROL PANEL P100



Max. 5 connectors



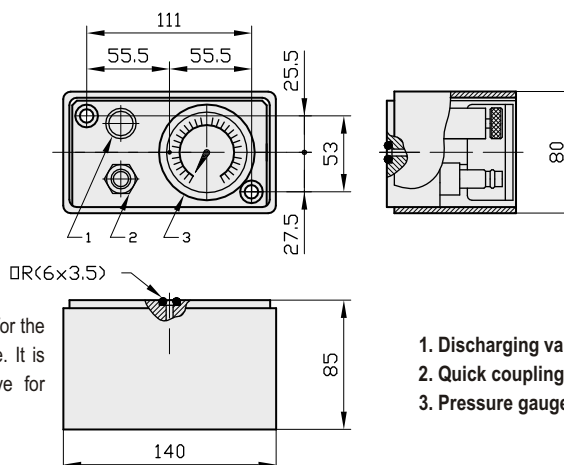
1. Discharging valve VD-1
2. Quick coupling for charging ERM
3. Pressure gauge MP-1

Standard control panel. This device is used for permanently controlling gas spring pressure. It is equipped with a quick-fit socket and discharging valve for decompression. The P100 control panel has up to 5 G 1/8 outlets for interconnecting gas springs. Pressure gauge range is from 0 to 400 Bar.

CONTROL PANEL FOR MANIFOLD PLATE P100M

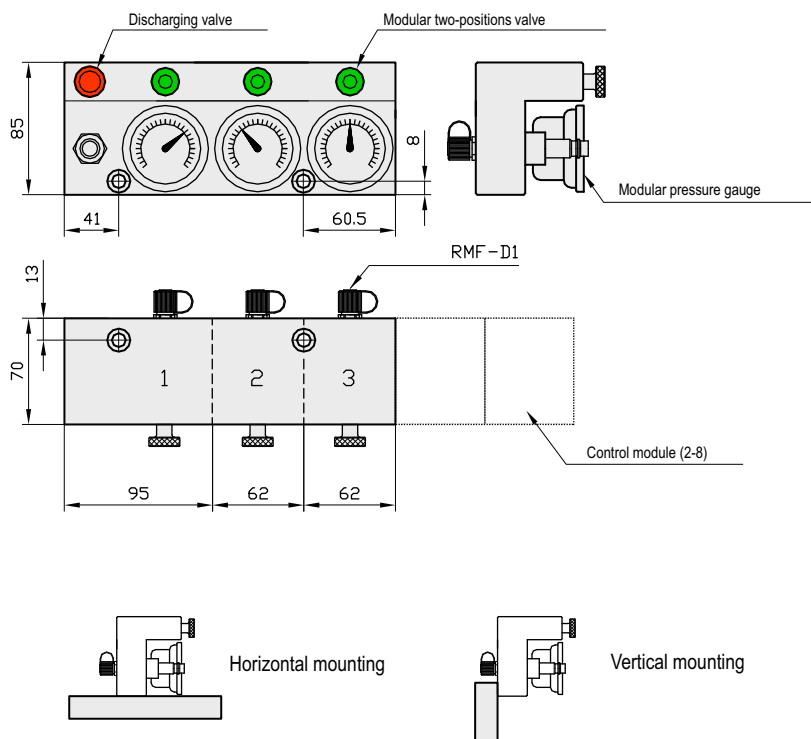
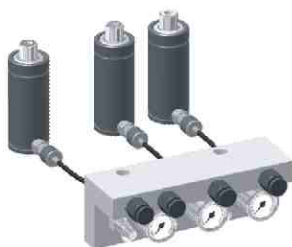
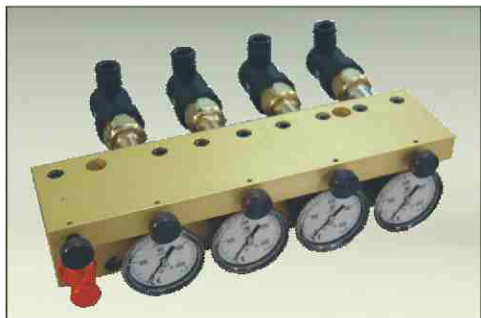


Standard control panel with a rear outlet for manifold plates: this device is used for the permanent control of gas springs interconnected by means of a manifold plate. It is equipped with a quick-fit socket for gas charging and a discharging valve for decompression. Pressure gauge range is from 0 to 400 Bar.



1. Discharging valve VD-1
2. Quick coupling for charging ERM
3. Pressure gauge MP-1

MULTIPLE CONTROL PANEL PM101



This is the PM101 modular multiple control panel, for controlling nitrogen systems. Each module individually controls each gas spring or gas-spring system, making individual or group filling or emptying possible.

CHARACTERISTICS: each module has a G1/8 outlet for interconnection. The control panel can be assembled on its lower base or on its back. Each model has pressure gauge with a range from 0 to 400 Bar.

UC-102 CHARGING UNIT FOR AUTONOMOUS GAS SPRINGS



The UC-102 charging unit is a charging device for autonomous gas springs. It is supplied with G1/8, M6A, M6-B, M6-C and M8 poses and charging couplings.

UC-103 CHARGING UNIT FOR CONTROL PANEL



The UC-103 charging unit is a charging device for gas springs that are interconnected by means of a control panel.