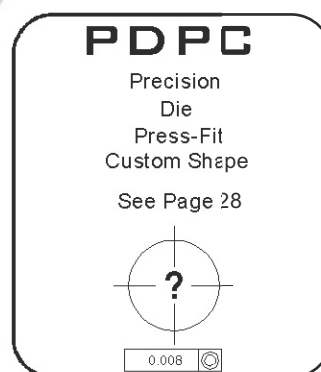
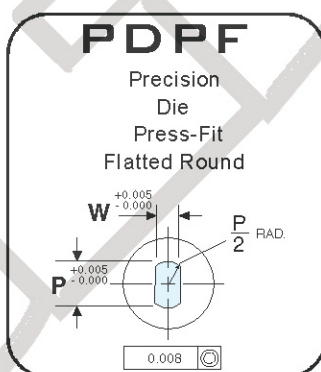
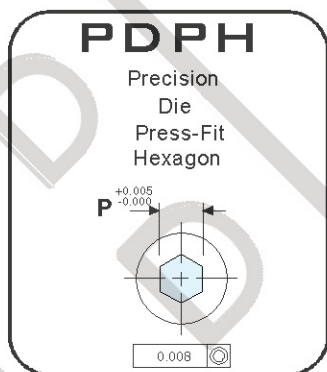
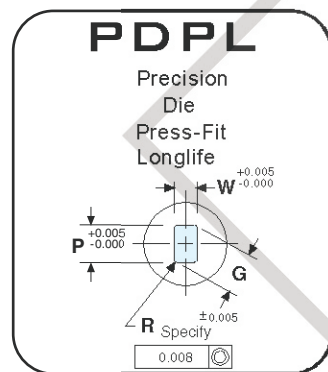
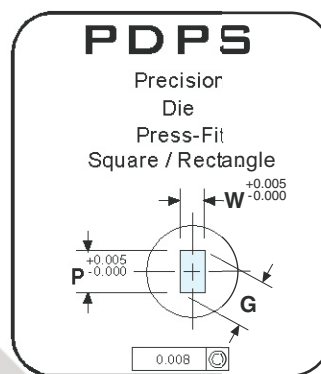
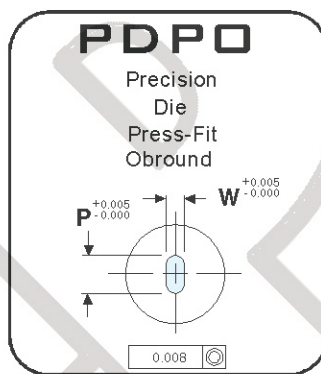
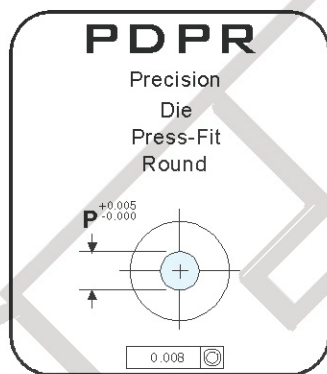
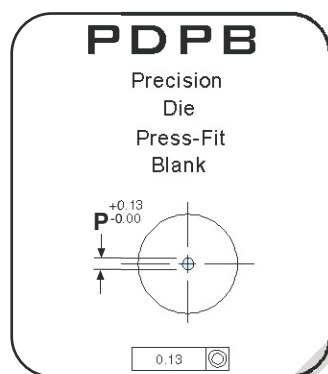
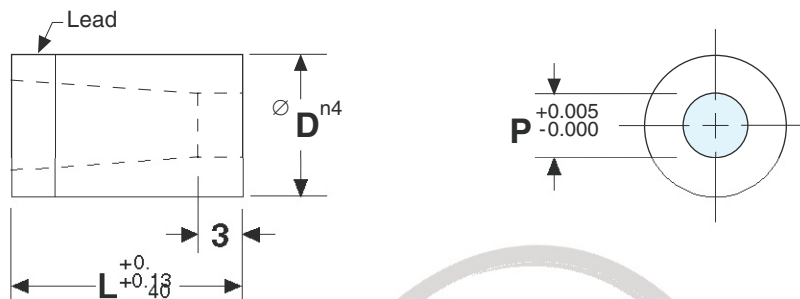


Precision Die Press-Fit



SKD11/D2 Steel - HRC 60-63
SKH51/M2 Steel - HRC 60-63

BEP Code	"D"	Overall Length "L"									Point Range "P"	Min. "W"
		13	16	20	22	25	28	30	32	35		
PDP_5	5	13	16	20	22	25	28	30	32	35	1.6 – 3.2	1.0
PDP_6	6	13	16	20	22	25	28	30	32	35	1.6 – 3.9	1.0
PDP_8	8	13	16	20	22	25	28	30	32	35	2.4 – 5.4	1.0
PDP_10	10	13	16	20	22	25	28	30	32	35	3.2 – 6.8	1.0
PDP_13	13	13	16	20	22	25	28	30	32	35	5.4 – 8.8	1.3
PDP_16	16			20	22	25	28	30	32	35	7.4 – 10.8	1.9
PDP_20	20			20	22	25	28	30	32	35	9.5 – 13.6	1.9
PDP_25	25			20	22	25	28	30	32	35	12.0 – 17.0	1.9
PDP_32	32			20	22	25	28	30	32	35	16.0 – 22.0	1.9
PDP_40	40			20	22	25	28	30	32	35	18.0 – 26.0	1.9