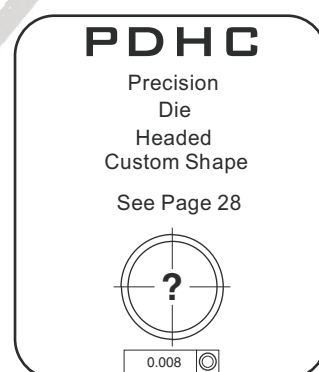
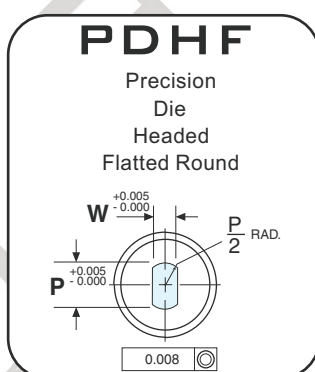
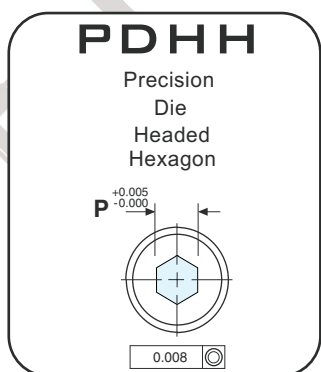
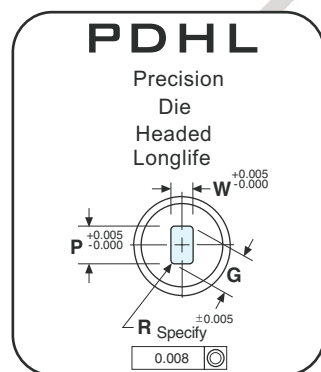
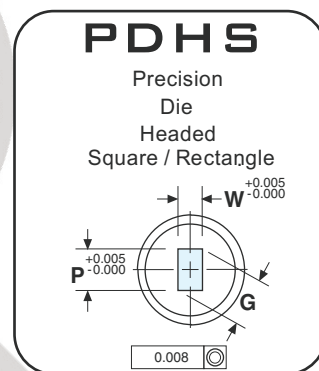
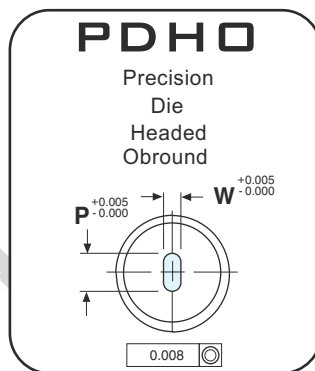
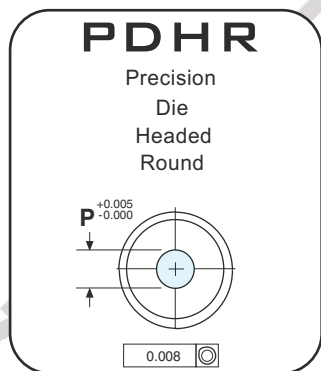
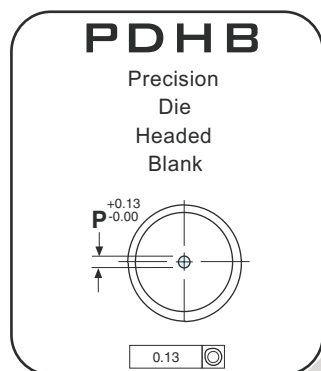
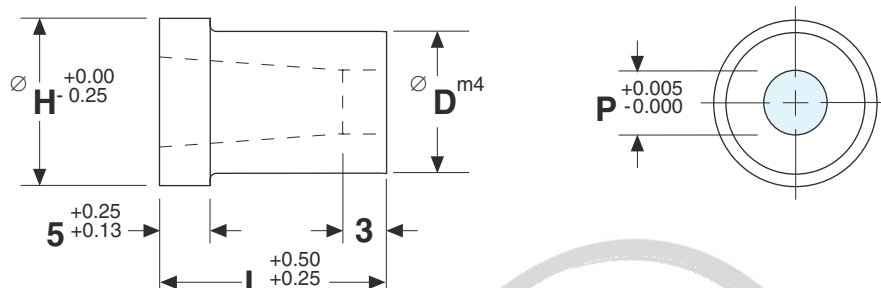


## Precision Die Headed



SKD11/D2 Steel - HRC 60-63  
SKH51/M2 Steel - HRC 60-63

BEP Code	"D"	Overall Length "L"									Point Range "P"	Min. "W"	Head Dia. "H"
		13	16	20	22	25	28	30	32	35			
PDH_	5	13	16	20	22	25	28	30	32	35	1.6 – 3.2	1.0	8
PDH_	6	13	16	20	22	25	28	30	32	35	1.6 – 3.9	1.0	9
PDH_	8	13	16	20	22	25	28	30	32	35	2.4 – 5.4	1.0	11
PDH_	10	13	16	20	22	25	28	30	32	35	3.2 – 6.8	1.0	13
PDH_	13	13	16	20	22	25	28	30	32	35	5.4 – 8.8	1.3	16
PDH_	16			20	22	25	28	30	32	35	7.4 – 10.8	1.9	19
PDH_	20			20	22	25	28	30	32	35	9.5 – 13.6	1.9	23
PDH_	25			20	22	25	28	30	32	35	12.0 – 17.0	1.9	28
PDH_	32			20	22	25	28	30	32	35	16.0 – 22.0	1.9	35
PDH_	40			20	22	25	28	30	32	35	18.0 – 26.0	1.9	43