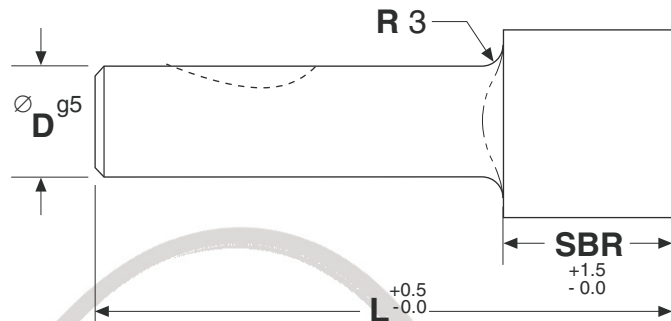
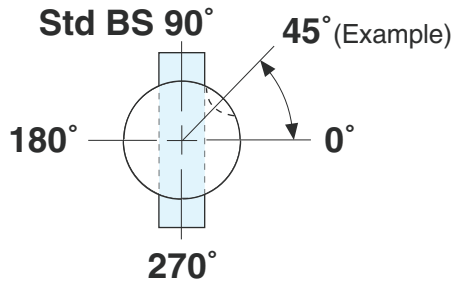
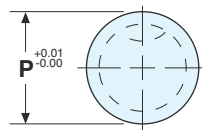


Light-duty Ball-lock Inverted



LBIR

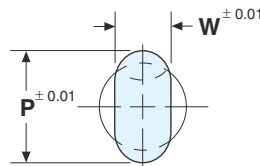
Light-Duty
Ball-Lock
Inverted
Round



0.01

LBIO

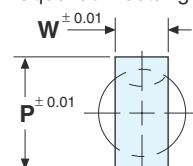
Light-Duty
Ball-Lock
Inverted
Obround



0.02

LBIS

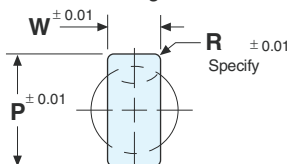
Light-Duty
Ball-Lock
Inverted
Square / Rectangle



0.02

LBIL

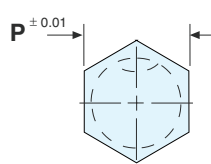
Light-Duty
Ball-Lock
Inverted
Long Life



0.02

LBIH

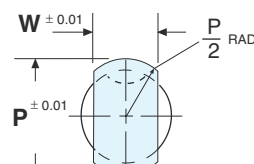
Light-Duty
Ball-Lock
Inverted
Hexagon



0.02

LBIF

Light-Duty
Ball-Lock
Inverted
Flatted Round



0.02

LBIC

Light-Duty
Ball-Lock
Inverted
Custom Shape

See Page 28



0.02

SKD11/D2 Steel - HRC 60-63
SKH51/M2 Steel - HRC 60-63

BEP Code	"D"	Point Length "SBR"	Overall Length "L"				Min. "P"	Min. "W"	Max. "P"
			71	80	90	100			
LBI_	10	16	71	80	90	100	10.1	4.5	22.0
LBI_	13	20	71	80	90	100	13.1	5.0	32.0
LBI_	16	25	71	80	90	100	16.1	6.5	38.0
LBI_	20	25	71	80	90	100	20.1	8.0	38.0
LBI_	25	25	71	80	90	100	25.1	11.0	45.0
LBI_	32	32		80	90	100	32.1	12.5	50.0