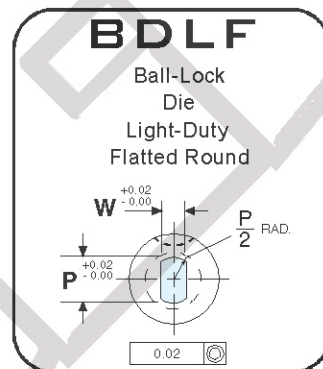
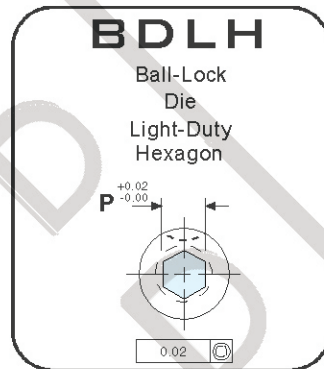
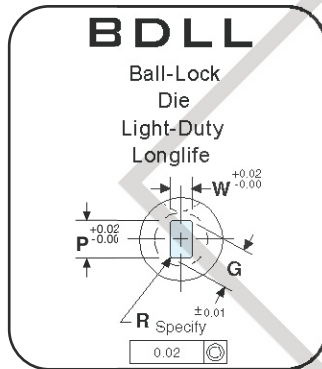
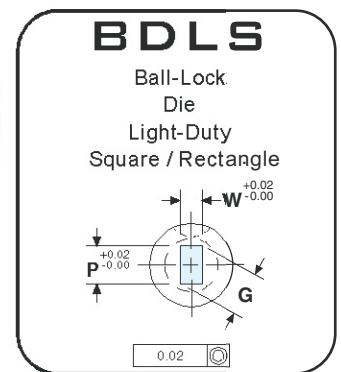
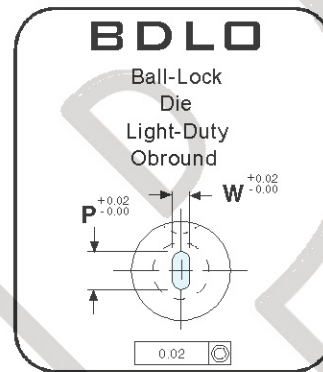
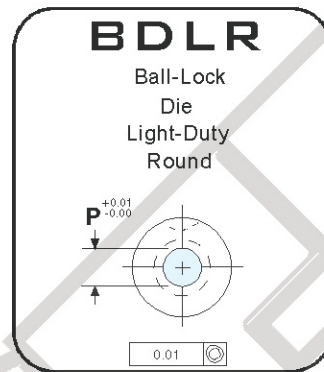
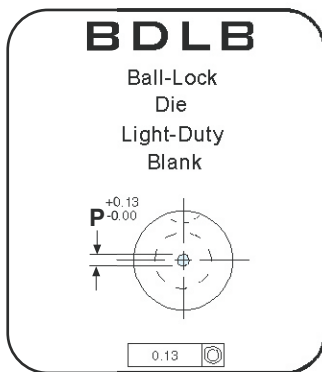
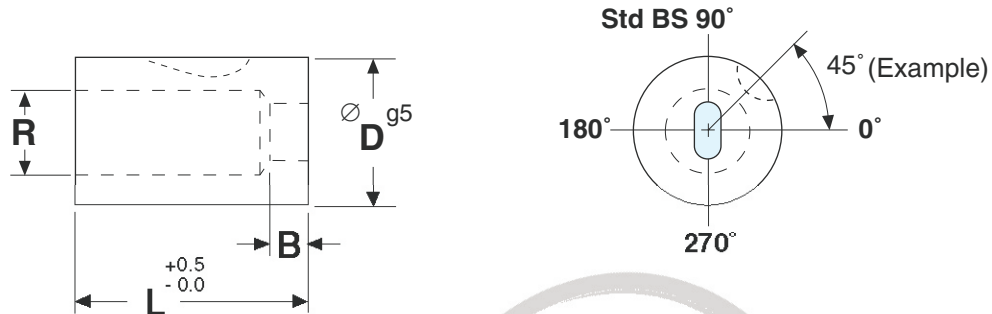


Punch & Die Button Series



Ball-lock Die Light-duty



SKD11/D2 Steel - HRC 60-63
SKH51/M2 Steel - HRC 60-63

BEP Code	"D"	Land "B"	Length "L"	Min. "P"	Min. "W"	Max. "P"/"G"	Max. "R"	Blank "P"
BDL_	13	4.0	32	1.5	1.2	5.0	5.8	0.8
BDL_	16	5.0	32	3.2	2.0	7.2	8.0	1.2
BDL_	20	5.0	32	4.0	2.4	11.0	11.9	1.5
BDL_	25	6.0	32	8.0	4.0	15.0	16.0	3.2
BDL_	32	6.0	32	11.0	4.8	19.0	20.0	3.2
BDL_	38	8.0	32	16.5	6.4	26.0	27.0	3.2

BRAHMADEVI ENGINEERING PRODUCTS

Regd. Office : 19, Martand Chowk, INDORE - 452 007 (M.P.) INDIA
Ph. : +91 - 731 - 2720243, Fax : +91 - 731 - 2721554

E-mail : ishan1809@yahoo.com, ruchir@diespares.com Website : www.diespares.com