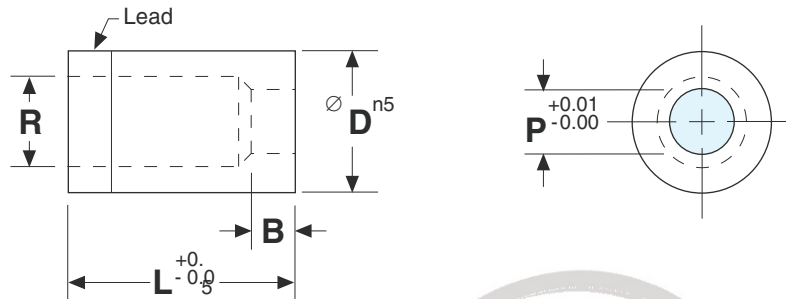


Punch & Die Button Series

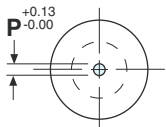


Standard Die Press-Fit



SDPB

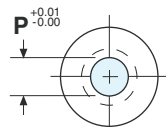
Standard
Die
Press-Fit
Blank



0.13

SDPR

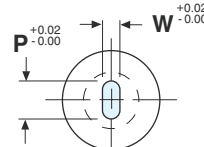
Standard
Die
Press-Fit
Round



0.01

SDPO

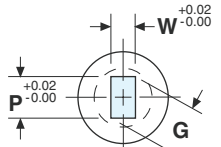
Standard
Die
Press-Fit
Obround



0.02

SDPS

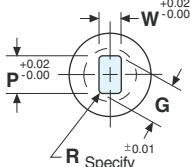
Standard
Die
Press-Fit
Square / Rectangle



0.02

SDPL

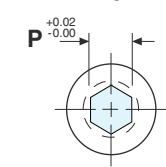
Standard
Die
Press-Fit
Longlife



0.02

SDPH

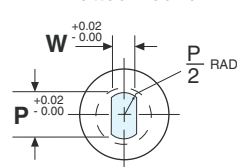
Standard
Die
Press-Fit
Hexagon



0.02

SDPF

Standard
Die
Press-Fit
Flatted Round



0.02

SDPC

Standard
Die
Press-Fit
Custom Shape



0.02

SKD11/D2 Steel - HRC 60-63
SKH51/M2 Steel - HRC 60-63

BEP Code	"D"	Land "B"			Overall Length "L"						Point Range "P"	Min. "W"	Max. "R"	
					20	22	25	28	30	32				35
SDP_	8	4	8		20	22	25	28	30	32	35	1.5 – 3.2	1.2	4.0
SDP_	10	4	8		20	22	25	28	30	32	35	1.5 – 5.0	2.0	5.8
SDP_	13	5	8		20	22	25	28	30	32	35	3.0 – 7.2	2.4	8.0
SDP_	16	5	8		20	22	25	28	30	32	35	5.0 – 8.8	3.2	9.5
SDP_	20	5	12		20	22	25	28	30	32	35	7.0 – 11.0	4.0	11.9
SDP_	22	6	12		20	22	25	28	30	32	35	9.0 – 13.8	4.8	14.7
SDP_	25	6	12		20	22	25	28	30	32	35	11.0 – 16.5	5.5	17.4
SDP_	32	6	12		20	22	25	28	30	32	35	13.0 – 19.8	6.4	20.6
SDP_	38	8	12		20	22	25	28	30	32	35	16.0 – 26.0	6.4	27.0
SDP_	40	8	12	20			25	28	30	32	35	16.0 – 26.0	8.0	27.0
SDP_	45	8	12	20			25	28	30	32	35	19.0 – 35.0	9.0	36.0
SDP_	50	8	12	20			25	28	30	32	35	22.0 – 40.0	10.0	41.0
SDP_	56	8	12	20			25	28	30	32	35	25.0 – 45.0	11.0	46.0
SDP_	63	8	12	20			25	28	30	32	35	28.0 – 50.0	12.0	51.0

BRAHMADEVI ENGINEERING PRODUCTS

Regd. Office : 19, Martand Chowk, INDORE - 452 007 (M.P.) INDIA
Ph. : +91 - 731 - 2720243, Fax : +91 - 731 - 2721554

E-mail : ishan1809@yahoo.com, ruchir@diespares.com Website : www.diespares.com